

Product datasheet for **TA345733**

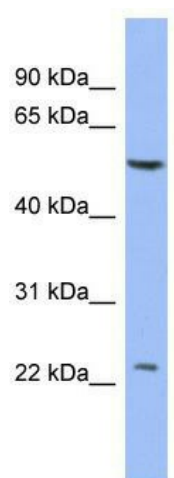
PABPC1L2A Rabbit Polyclonal Antibody

Product data:

Product Type:	Primary Antibodies
Applications:	WB
Recommended Dilution:	WB
Reactivity:	Human
Host:	Rabbit
Isotype:	IgG
Clonality:	Polyclonal
Immunogen:	The immunogen for anti-PABPC1L2A antibody: synthetic peptide directed towards the middle region of human PABPC1L2A. Synthetic peptide located within the following region: NGMFLNRYKIFVGRFKSHKEREARGAWARQSTSADVKDFFEDTDEEATL
Formulation:	Liquid. Purified antibody supplied in 1x PBS buffer with 0.09% (w/v) sodium azide and 2% sucrose.
Purification:	Affinity Purified
Conjugation:	Unconjugated
Storage:	Store at -20°C as received.
Stability:	Stable for 12 months from date of receipt.
Predicted Protein Size:	23 kDa
Gene Name:	poly(A) binding protein cytoplasmic 1 like 2A
Database Link:	NP_001012995 Entrez Gene 340529 Human Q5IQF8
Background:	The function of this protein remains unknown.
Synonyms:	RBM32A
Note:	Immunogen Sequence Homology: Pig: 100%; Horse: 100%; Human: 100%; Bovine: 100%; Rabbit: 100%; Guinea pig: 93%; Rat: 77%


[View online »](#)

Product images:



WB Suggested Anti-PABPC1L2A Antibody
Titration: 0.2-1 ug/ml; ELISA Titer: 1: 62500;
Positive Control: THP-1 cell lysate