

Product datasheet for **TA345728**

GTPBP9 (OLA1) Rabbit Polyclonal Antibody

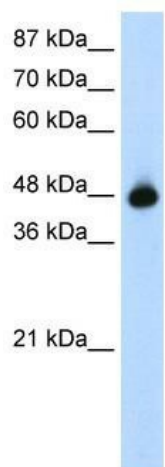
Product data:

Product Type:	Primary Antibodies
Applications:	IHC, WB
Recommended Dilution:	WB, IHC
Reactivity:	Human
Host:	Rabbit
Isotype:	IgG
Clonality:	Polyclonal
Immunogen:	The immunogen for anti-GTPBP9 antibody: synthetic peptide directed towards the N terminal of human GTPBP9. Synthetic peptide located within the following region: MIGPIIDKLEKVAVRGGDKKLKPEYDIMCKVKSWVIDQKKPVRFYHDWND
Formulation:	Liquid. Purified antibody supplied in 1x PBS buffer with 0.09% (w/v) sodium azide and 2% sucrose. <i>Note that this product is shipped as lyophilized powder to China customers.</i>
Purification:	Protein A purified
Conjugation:	Unconjugated
Storage:	Store at -20°C as received.
Stability:	Stable for 12 months from date of receipt.
Predicted Protein Size:	44 kDa
Gene Name:	Obg-like ATPase 1
Database Link:	NP_037473 Entrez Gene 29789 Human Q9NTK5
Background:	GTPBP9 belongs to the GTP1/OBG family and the function remains unknown.
Synonyms:	DOC45; GBP45; GTBP9; GTPBP9; PTD004
Note:	Immunogen Sequence Homology: Dog: 100%; Pig: 100%; Rat: 100%; Horse: 100%; Human: 100%; Mouse: 100%; Bovine: 100%; Rabbit: 100%; Guinea pig: 100%; Zebrafish: 93%

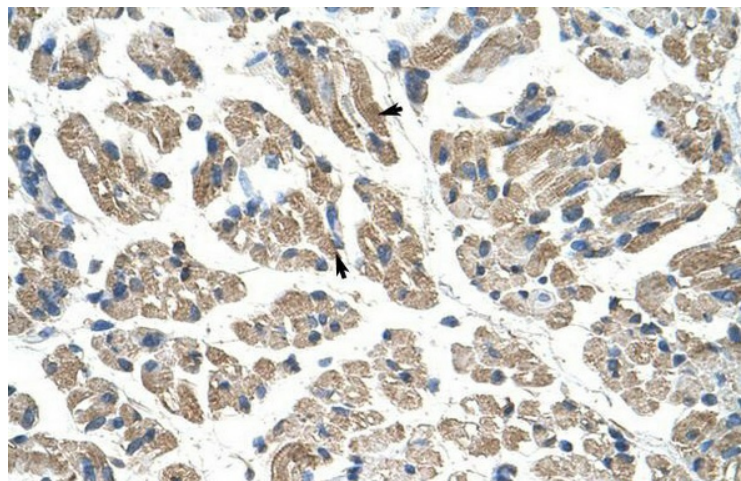


[View online »](#)

Product images:



WB Suggested Anti-GTPBP9 Antibody Titration: 1.25 ug/ml; Positive Control: HepG2 cell lysate.OLA1 is supported by BioGPS gene expression data to be expressed in HepG2



Rabbit Anti-GTPBP9 Antibody; Paraffin Embedded Tissue: Human Muscle; Cellular Data: Skeletal muscle cells; Antibody Concentration: 4.0-8.0 ug/ml; Magnification: 400X