

## Product datasheet for **TA345726**

### FUS Rabbit Polyclonal Antibody

#### Product data:

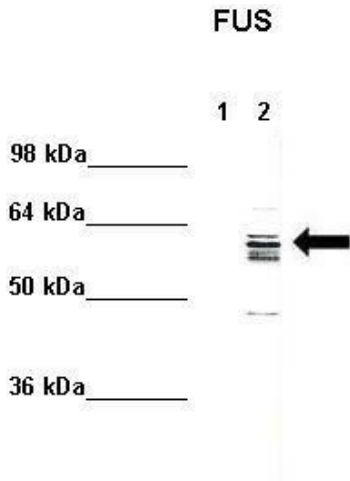
Product Type:	Primary Antibodies
Applications:	IHC, WB
Recommended Dilution:	WB, IHC
Reactivity:	Human, Mouse
Host:	Rabbit
Isotype:	IgG
Clonality:	Polyclonal
Immunogen:	The immunogen for anti-FUS antibody: synthetic peptide directed towards the N terminal of human FUS. Synthetic peptide located within the following region: MASNDYTQQATQSYGAYPTQPGQGYSQQSSQPYGQQSYSGYSQSTDTSGY
Formulation:	Liquid. Purified antibody supplied in 1x PBS buffer with 0.09% (w/v) sodium azide and 2% sucrose. <i>Note that this product is shipped as lyophilized powder to China customers.</i>
Purification:	Affinity Purified
Conjugation:	Unconjugated
Storage:	Store at -20°C as received.
Stability:	Stable for 12 months from date of receipt.
Predicted Protein Size:	29 kDa
Gene Name:	FUS RNA binding protein
Database Link:	<a href="#">NP_001010850</a> <a href="#">Entrez Gene 233908 Mouse</a> <a href="#">Entrez Gene 2521 Human</a> <a href="#">P35637</a>
Background:	FUS binds both single-stranded and double-stranded DNA and promotes ATP-independent annealing of complementary single-stranded DNAs and D-loop formation in superhelical double-stranded DNA. FUS may play a role in maintenance of genomic integrity.
Synonyms:	FUS-CHOP; FUS1; TLS
Note:	Immunogen Sequence Homology: Human: 100%; Mouse: 100%; Dog: 93%; Pig: 93%; Rat: 93%; Bovine: 93%; Rabbit: 93%



[View online »](#)

Protein Families: Druggable Genome, Stem cell - Pluripotency

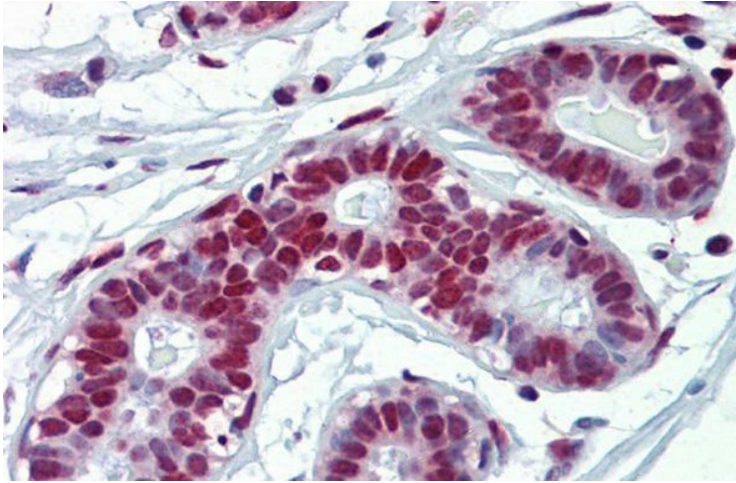
Product images:



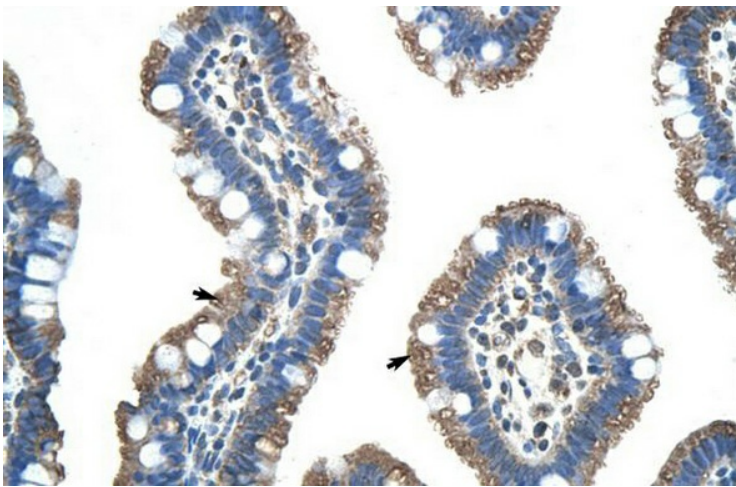
WB Suggested Anti-FUS Antibody; Positive Control: Lane 1: 5ug mouse brain cytoplasm Lane 2: 5ug mouse brain nucleus; Primary Antibody Dilution: 1: 1000; Secondary Antibody: Anti rabbit - IR-dye; Secondary Antibody Dilution: 1: 10, 000;



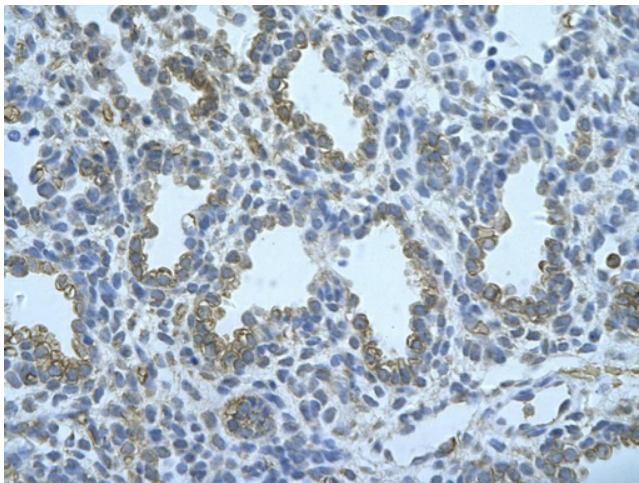
WB Suggested Anti-FUS Antibody Titration: 0.2-1 ug/ml; Positive Control: HepG2 cell lysate.FUS is strongly supported by BioGPS gene expression data to be expressed in Human HepG2 cells



Rabbit Anti-FUS Antibody; Paraffin Embedded Tissue: Human Breast; Antibody Concentration: 5 ug/ml



Rabbit Anti-FUS Antibody; Paraffin Embedded Tissue: Human Intestine; Cellular Data: Epithelial cells of intestinal villas; Antibody Concentration: 4.0-8.0 ug/ml; Magnification: 400X



Rabbit Anti-FUS Antibody; Paraffin Embedded Tissue: Human alveolar cell; Cellular Data: Epithelial cells of renal tubule; Antibody Concentration: 4.0-8.0 ug/ml; Magnification: 400X