

Product datasheet for **TA345725**

SNRP70 (SNRNP70) Rabbit Polyclonal Antibody

Product data:

Product Type:	Primary Antibodies
Applications:	IHC, WB
Recommended Dilution:	WB, IHC
Reactivity:	Human
Host:	Rabbit
Isotype:	IgG
Clonality:	Polyclonal
Immunogen:	The immunogen for anti-SNRP70 antibody: synthetic peptide directed towards the N terminal of human SNRP70. Synthetic peptide located within the following region: YLPPLEKLPHEKHHNQPYCGIAPYIREFEDPRDAPPPTRAETREERMERK
Formulation:	Liquid. Purified antibody supplied in 1x PBS buffer with 0.09% (w/v) sodium azide and 2% sucrose. <i>Note that this product is shipped as lyophilized powder to China customers.</i>
Purification:	Protein A purified
Conjugation:	Unconjugated
Storage:	Store at -20°C as received.
Stability:	Stable for 12 months from date of receipt.
Predicted Protein Size:	48 kDa
Gene Name:	small nuclear ribonucleoprotein U1 subunit 70
Database Link:	NP_003080 Entrez Gene 6625 Human P08621
Background:	SNRP70 contains 1 RRM (RNA recognition motif) domain and mediates the splicing of pre-mRNA by binding to the loop I region of U1-snRNA. Western blots using two different antibodies against two unique regions of this protein target confirm the same apparent molecular weight in our tests.
Synonyms:	RNPU1Z; RPU1; Snp1; SNRP70; U1-70K; U1AP; U1RNP; U170K



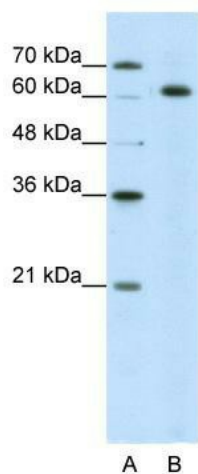
[View online »](#)

Note: Immunogen Sequence Homology: Dog: 100%; Pig: 100%; Rat: 100%; Horse: 100%; Human: 100%; Mouse: 100%; Bovine: 100%; Rabbit: 100%; Zebrafish: 100%; Guinea pig: 100%

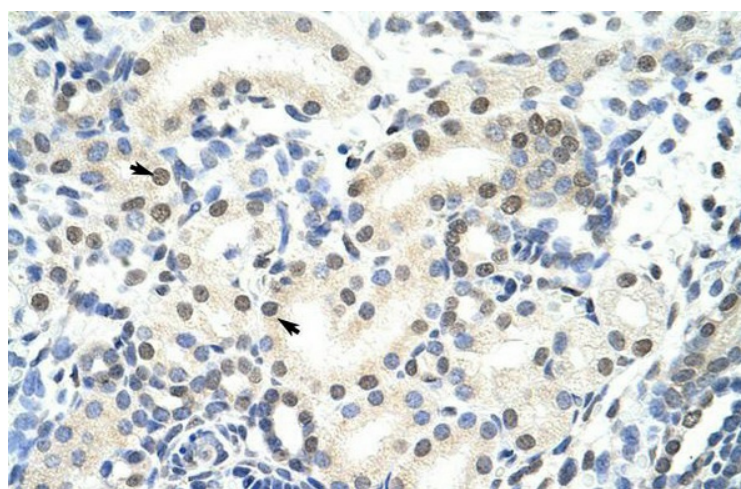
Protein Families: Druggable Genome

Protein Pathways: Spliceosome

Product images:



WB Suggested Anti-SNRP70 Antibody Titration: 5.0 ug/ml; ELISA Titer: 1: 62500; Positive Control: HepG2 cell lysate. SNRNP70 is supported by BioGPS gene expression data to be expressed in HepG2



Rabbit Anti-SNRP70 Antibody; Paraffin Embedded Tissue: Human Kidney; Cellular Data: Epithelial cells of renal tubule; Antibody Concentration: 4.0-8.0 ug/ml; Magnification: 400X