

Product datasheet for TA345722

Gemin2 Rabbit Polyclonal Antibody

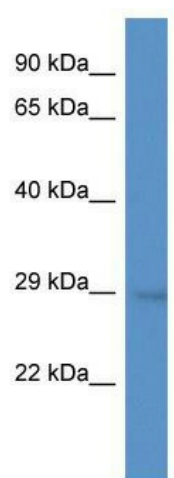
Product data:

Product Type:	Primary Antibodies
Applications:	WB
Recommended Dilution:	WB
Reactivity:	Mouse
Host:	Rabbit
Isotype:	IgG
Clonality:	Polyclonal
Immunogen:	The immunogen for anti-Sip1 antibody: synthetic peptide corresponding to a region of Mouse. Synthetic peptide located within the following region: PRTPQEYLRRVQIEAAQCPDVVVAQIDPKKLKRKQSVNISLSGCQPAPEG
Formulation:	Liquid. Purified antibody supplied in 1x PBS buffer with 0.09% (w/v) sodium azide and 2% sucrose. <i>Note that this product is shipped as lyophilized powder to China customers.</i>
Purification:	Affinity Purified
Conjugation:	Unconjugated
Storage:	Store at -20°C as received.
Stability:	Stable for 12 months from date of receipt.
Predicted Protein Size:	30 kDa
Gene Name:	gem (nuclear organelle) associated protein 2
Database Link:	NP_079932 Entrez Gene 66603 Mouse Q9CQQ4
Background:	The SMN complex plays an essential role in spliceosomal snRNP assembly in the cytoplasm and is required for pre-mRNA splicing in the nucleus.
Synonyms:	1700012N19Rik; Sip1
Note:	Immunogen Sequence Homology: Dog: 100%; Pig: 100%; Rat: 100%; Horse: 100%; Human: 100%; Mouse: 100%; Bovine: 100%; Rabbit: 100%; Guinea pig: 100%; Zebrafish: 93%



[View online »](#)

Product images:



WB Suggested Anti-Sip1 Antibody; Titration: 1.0 ug/ml; Positive Control: Mouse Brain