

## Product datasheet for **TA345721**

### Gemin 2 (GEMIN2) Rabbit Polyclonal Antibody

#### Product data:

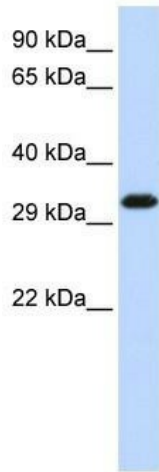
|                         |   |
|-------------------------|---|
| Product Type:           | Primary Antibodies  |
| Applications:           | WB  |
| Recommended Dilution:   | WB  |
| Reactivity:             | Human   |
| Host:                   | Rabbit  |
| Isotype:                | IgG   |
| Clonality:              | Polyclonal  |
| Immunogen:              | The immunogen for anti-SIP1 antibody: synthetic peptide directed towards the middle region of human SIP1. Synthetic peptide located within the following region:<br>HSLIRQLARRCSEVRLVDSKDDERVPALNLLICLVSRFYDQRDLADEPS |
| Formulation:            | Liquid. Purified antibody supplied in 1x PBS buffer with 0.09% (w/v) sodium azide and 2% sucrose.<br><i>Note that this product is shipped as lyophilized powder to China customers.</i>                               |
| Purification:           | Affinity Purified   |
| Conjugation:            | Unconjugated  |
| Storage:                | Store at -20°C as received.   |
| Stability:              | Stable for 12 months from date of receipt.  |
| Predicted Protein Size: | 30 kDa  |
| Gene Name:              | gem nuclear organelle associated protein 2  |
| Database Link:          | <a href="#">NP_001009182</a><br><a href="#">Entrez Gene 8487 Human</a><br><a href="#">O14893</a>  |
| Background:             | Part of the core SMN complex which plays an essential role in spliceosomal snRNP assembly in the cytoplasm and is required for pre-mRNA splicing in the nucleus.  |
| Synonyms:               | SIP1; SIP1-delta  |
| Note:                   | Immunogen Sequence Homology: Dog: 100%; Pig: 100%; Horse: 100%; Human: 100%; Bovine: 100%; Rat: 93%; Mouse: 93%; Rabbit: 93%  |



[View online »](#)

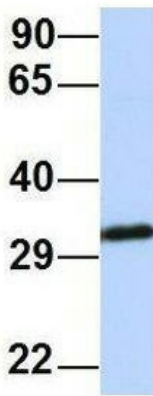
Protein Families: Druggable Genome, Stem cell - Pluripotency

**Product images:**



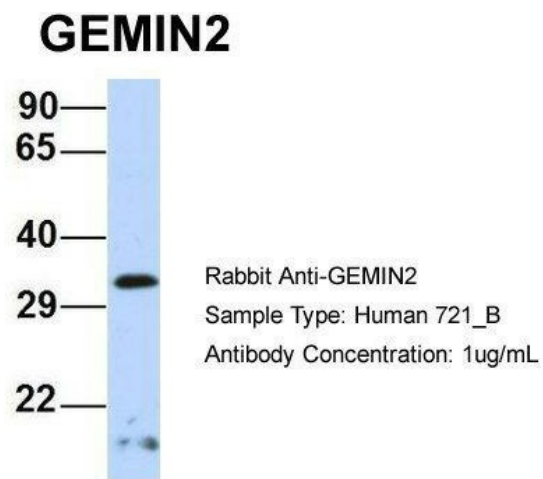
WB Suggested Anti-SIP1 Antibody Titration: 0.2-1 ug/ml; ELISA Titer: 1: 312500; Positive Control: Hela cell lysate. GEMIN2 is strongly supported by BioGPS gene expression data to be expressed in HeLa

**GEMIN2**



Rabbit Anti-GEMIN2  
 Sample Type: Human MCF7  
 Antibody Concentration: 1ug/mL

Host: Rabbit; Target Name: GEMIN2; Sample Tissue: Human MCF7; Antibody Dilution: 1.0 ug/ml. GEMIN2 is strongly supported by BioGPS gene expression data to be expressed in MCF7



Host: Rabbit; Target Name: GEMIN2; Sample Tissue: Human 721\_B; Antibody Dilution: 1.0 ug/ml. GEMIN2 is strongly supported by BioGPS gene expression data to be expressed in Human 721\_B cells