

## Product datasheet for **TA345719**

### CCBL2 (KYAT3) Rabbit Polyclonal Antibody

#### Product data:

Product Type:	Primary Antibodies
Applications:	WB
Recommended Dilution:	WB
Reactivity:	Human
Host:	Rabbit
Isotype:	IgG
Clonality:	Polyclonal
Immunogen:	The immunogen for anti-CCBL2 antibody: synthetic peptide directed towards the C terminal of human CCBL2. Synthetic peptide located within the following region: LSAIPVSAFCNSETKSQFEKFRFCFIKKDSTLDAAEIHKAWSVQKS
Formulation:	Liquid. Purified antibody supplied in 1x PBS buffer with 0.09% (w/v) sodium azide and 2% sucrose. <i>Note that this product is shipped as lyophilized powder to China customers.</i>
Purification:	Affinity Purified
Conjugation:	Unconjugated
Storage:	Store at -20°C as received.
Stability:	Stable for 12 months from date of receipt.
Predicted Protein Size:	48 kDa
Gene Name:	kynurenine aminotransferase 3
Database Link:	<a href="#">NP_001008662</a> <a href="#">Entrez Gene 56267 Human</a> <a href="#">Q6YP21</a>



[View online »](#)

**Background:**

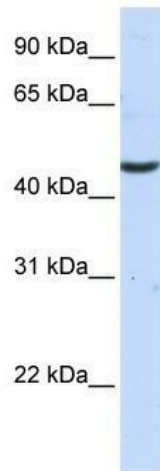
CCBL2 is an aminotransferase that transaminates kynurenine to form kynurenic acid. Kynurenic acid is a metabolite of tryptophan. Multiple alternatively spliced transcript variants that encode different proteins have been described for this gene. One of the transcripts encodes a predicted protein that has sequence identity to the protein encoded by the RNA binding motif protein, X-linked gene (RBMX). This gene encodes an aminotransferase that transaminates kynurenine to form kynurenic acid. Kynurenic acid is a metabolite of tryptophan. Multiple alternatively spliced transcript variants that encode different proteins have been described for this gene. One of the transcripts encodes a predicted protein that has sequence identity to the protein encoded by the RNA binding motif protein, X-linked gene (RBMX).

**Synonyms:**

CCBL2; KAT3; KATIII

**Note:**

Immunogen Sequence Homology: Dog: 100%; Pig: 100%; Rat: 100%; Human: 100%; Mouse: 100%; Bovine: 100%; Guinea pig: 100%; Horse: 93%

**Product images:**

WB Suggested Anti-CCBL2 Antibody Titration: 0.2-1 ug/ml; ELISA Titer: 1: 62500; Positive Control: Human brain