

Product datasheet for **TA345718**

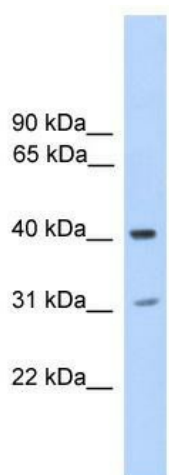
PHOSPHO2 Rabbit Polyclonal Antibody

Product data:

Product Type:	Primary Antibodies
Applications:	WB
Recommended Dilution:	WB
Reactivity:	Human
Host:	Rabbit
Isotype:	IgG
Clonality:	Polyclonal
Immunogen:	The immunogen for anti-PHOSPHO2 antibody: synthetic peptide directed towards the N terminal of human PHOSPHO2. Synthetic peptide located within the following region: MKILLVDFDNTIIDDNSDTWIVQCAPNKKLPIELRDSYRKGFWTEFMGR
Formulation:	Liquid. Purified antibody supplied in 1x PBS buffer with 0.09% (w/v) sodium azide and 2% sucrose.
Purification:	Affinity Purified
Conjugation:	Unconjugated
Storage:	Store at -20°C as received.
Stability:	Stable for 12 months from date of receipt.
Predicted Protein Size:	28 kDa
Gene Name:	phosphatase, orphan 2
Database Link:	NP_001008489 Entrez Gene 493911 Human Q8TCD6
Background:	PHOSPHO2 is a phosphatase that has high activity toward pyridoxal 5'-phosphate (PLP). PHOSPHO2 also active at much lower level toward pyrophosphate, phosphoethanolamine (PEA), phosphocholine (PCho), phospho-l-tyrosine, fructose-6-phosphate, p-nitrophenyl phosphate, and h-glycerophosphate.
Synonyms:	MGC22679; MGC111048
Note:	Immunogen Sequence Homology: Human: 100%; Pig: 92%; Rat: 79%; Mouse: 79%; Dog: 77%; Bovine: 77%


[View online »](#)

Product images:



WB Suggested Anti-PHOSPHO2 Antibody
Titration: 0.2-1 ug/ml; ELISA Titer: 1: 312500;
Positive Control: Human Muscle