

Product datasheet for **TA345712**

SAP155 (SF3B1) Rabbit Polyclonal Antibody

Product data:

| | |
|-------------------------|--|
| Product Type: | Primary Antibodies |
| Applications: | IHC, WB |
| Recommended Dilution: | WB, IHC |
| Reactivity: | Human |
| Host: | Rabbit |
| Isotype: | IgG |
| Clonality: | Polyclonal |
| Immunogen: | The immunogen for anti-SF3B1 antibody: synthetic peptide directed towards the middle region of human SF3B1. Synthetic peptide located within the following region: LLNDIPQSTEQYDPFAEHRPPKIADREDEYKHKHRRMIISPERLDPFADG |
| Formulation: | Liquid. Purified antibody supplied in 1x PBS buffer with 0.09% (w/v) sodium azide and 2% sucrose. <i>Note that this product is shipped as lyophilized powder to China customers.</i> |
| Purification: | Protein A purified |
| Conjugation: | Unconjugated |
| Storage: | Store at -20°C as received. |
| Stability: | Stable for 12 months from date of receipt. |
| Predicted Protein Size: | 87 kDa |
| Gene Name: | splicing factor 3b subunit 1 |
| Database Link: | NP_001005526 Entrez Gene 23451 Human O75533 |
| Background: | SF3B1 is the subunit 1 of the splicing factor 3b protein complex. Splicing factor 3b, together with splicing factor 3a and a 12S RNA unit, forms the U2 small nuclear ribonucleoproteins complex (U2 snRNP). The splicing factor 3b/3a complex binds pre-mRNA upstream of the intron's branch site in a sequence independent manner and may anchor the U2 snRNP to the pre-mRNA. Splicing factor 3b is also a component of the minor U12-type spliceosome. |
| Synonyms: | Hsh155; MDS; PRP10; PRPF10; SAP155; SF3b155 |

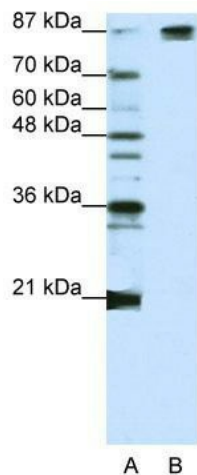


[View online »](#)

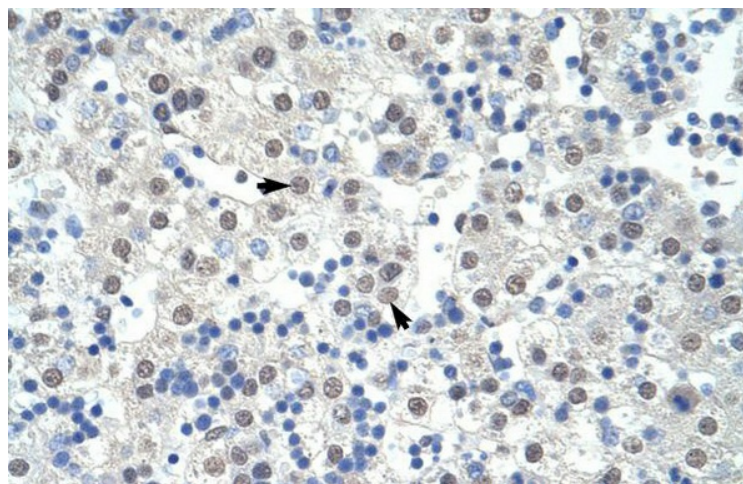
Note: Immunogen Sequence Homology: Dog: 100%; Pig: 100%; Rat: 100%; Horse: 100%; Human: 100%; Mouse: 100%; Bovine: 100%; Rabbit: 100%; Guinea pig: 100%; Goat: 86%; Zebrafish: 86%

Protein Pathways: Spliceosome

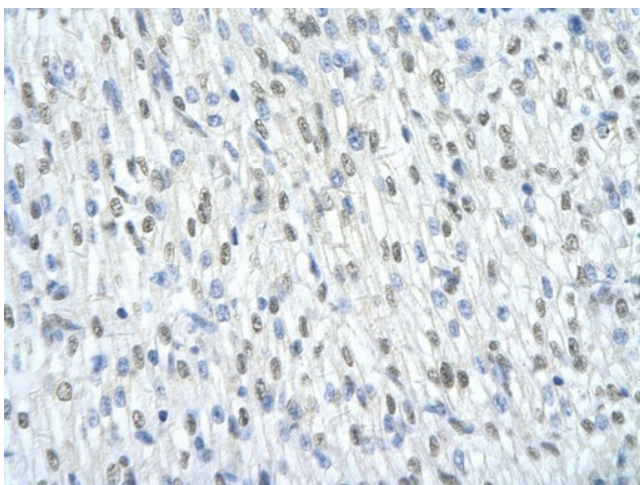
Product images:



WB Suggested Anti-SF3B1 Antibody Titration: 1.25 ug/ml; ELISA Titer: 1: 62500; Positive Control: Jurkat cell lysate; SF3B1 is strongly supported by BioGPS gene expression data to be expressed in Human Jurkat cells



Rabbit Anti-SF3B1 Antibody; Paraffin Embedded Tissue: Human Liver; Cellular Data: Hepatocytes; Antibody Concentration: 4.0-8.0 ug/ml; Magnification: 400X



Rabbit Anti-SF3B1 Antibody; Paraffin Embedded
Tissue: Human cardiac cell; Cellular Data:
Epithelial cells of renal tubule; Antibody
Concentration: 4.0-8.0 ug/ml; Magnification: 400X