

Product datasheet for TA345711

CROP (LUC7L3) Rabbit Polyclonal Antibody

Product data:

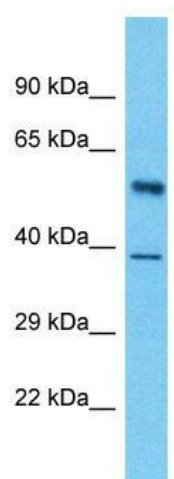
Product Type:	Primary Antibodies
Applications:	WB
Recommended Dilution:	WB
Reactivity:	Human
Host:	Rabbit
Isotype:	IgG
Clonality:	Polyclonal
Immunogen:	The immunogen for Anti-LUC7L3 antibody is: synthetic peptide directed towards the middle region of Human LUC7L3. Synthetic peptide located within the following region: LKKEKQEREEREKEREREREERERKRRREEEEREKERARDRERRKRSRSR
Formulation:	Liquid. Purified antibody supplied in 1x PBS buffer with 0.09% (w/v) sodium azide and 2% sucrose. <i>Note that this product is shipped as lyophilized powder to China customers.</i>
Purification:	Affinity Purified
Conjugation:	Unconjugated
Storage:	Store at -20°C as received.
Stability:	Stable for 12 months from date of receipt.
Predicted Protein Size:	53 kDa
Gene Name:	LUC7 like 3 pre-mRNA splicing factor
Database Link:	NP_006098 Entrez Gene 51747 Human O95232
Background:	The function of this protein remains unknown.
Synonyms:	CRA; CREAP-1; CROP; hLuc7A; LUC7A; OA48-18
Note:	Immunogen Sequence Homology: Dog: 100%; Pig: 100%; Rat: 100%; Horse: 100%; Human: 100%; Mouse: 100%; Bovine: 100%; Rabbit: 100%; Guinea pig: 100%; Zebrafish: 93%; Yeast: 79%



[View online »](#)

Protein Families: Stem cell - Pluripotency

Product images:



Host: Rabbit; Target Name: LUC7L3; Sample
Tissue: Pancreas Tumor lysates; Antibody
Dilution: 1.0 ug/ml