

Product datasheet for **TA345710**

Deleted in azoospermia 4 (DAZ4) Rabbit Polyclonal Antibody

Product data:

Product Type:	Primary Antibodies
Applications:	IHC, WB
Recommended Dilution:	WB, IHC
Reactivity:	Human
Host:	Rabbit
Isotype:	IgG
Clonality:	Polyclonal
Immunogen:	The immunogen for anti-DAZ4 antibody: synthetic peptide directed towards the N terminal of human DAZ4. Synthetic peptide located within the following region: MSAANPETPNSTISREASTQSSSAAASQGWVLPEGKIVPNTVFVGGIDAR
Formulation:	Liquid. Purified antibody supplied in 1x PBS buffer with 0.09% (w/v) sodium azide and 2% sucrose. <i>Note that this product is shipped as lyophilized powder to China customers.</i>
Purification:	Affinity Purified
Conjugation:	Unconjugated
Storage:	Store at -20°C as received.
Stability:	Stable for 12 months from date of receipt.
Predicted Protein Size:	36 kDa
Gene Name:	deleted in azoospermia 4
Database Link:	NP_001005375 Entrez Gene 57135 Human Q86SG3
Background:	This gene is a member of the DAZ gene family and is a candidate for the human Y-chromosomal azoospermia factor (AZF). This RNA-binding protein is important for spermatogenesis.
Synonyms:	pDP1680; pDP1681
Note:	Immunogen Sequence Homology: Dog: 100%; Pig: 100%; Rat: 100%; Horse: 100%; Human: 100%; Mouse: 100%; Bovine: 100%; Goat: 93%; Guinea pig: 93%; Rabbit: 92%

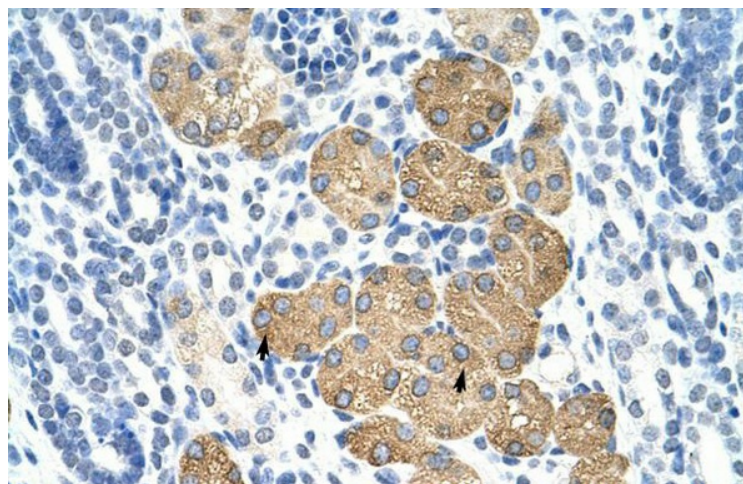


[View online »](#)

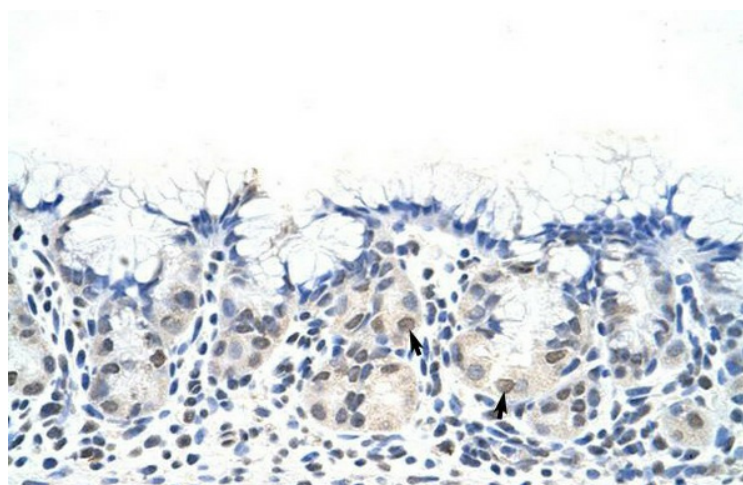
Product images:



WB Suggested Anti-DAZ4 Antibody Titration: 0.2-1 ug/ml; ELISA Titer: 1: 312500; Positive Control: HepG2 cell lysate



Rabbit Anti-DAZ4 Antibody; Paraffin Embedded Tissue: Human Kidney; Cellular Data: Epithelial cells of renal tubule; Antibody Concentration: 4.0-8.0 ug/ml; Magnification: 400X



Rabbit Anti-DAZ4 Antibody; Paraffin Embedded Tissue: Human Stomach; Cellular Data: Epithelial cells of fundic gland; Antibody Concentration: 4.0-8.0 ug/ml; Magnification: 400X