

Product datasheet for **TA345702**

RBMS3 Rabbit Polyclonal Antibody

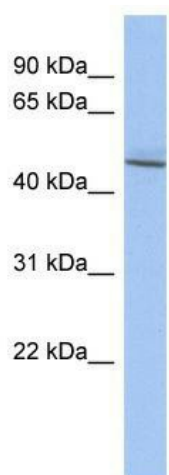
Product data:

Product Type:	Primary Antibodies
Applications:	WB
Recommended Dilution:	IHC, WB
Reactivity:	Human
Host:	Rabbit
Isotype:	IgG
Clonality:	Polyclonal
Immunogen:	The immunogen for anti-RBMS3 antibody: synthetic peptide directed towards the middle region of human RBMS3. Synthetic peptide located within the following region: PTAVSIEGWADTSPQTVAPSSQDTSQGQQQIAVDTSNEHAPAYSQQSK
Formulation:	Liquid. Purified antibody supplied in 1x PBS buffer with 0.09% (w/v) sodium azide and 2% sucrose. <i>Note that this product is shipped as lyophilized powder to China customers.</i>
Purification:	Affinity Purified
Conjugation:	Unconjugated
Storage:	Store at -20°C as received.
Stability:	Stable for 12 months from date of receipt.
Predicted Protein Size:	46 kDa
Gene Name:	RNA binding motif single stranded interacting protein 3
Database Link:	NP_001003792 Entrez Gene 27303 Human Q6XE24
Background:	RBMS3 is a member of a small family of proteins which bind single stranded DNA/RNA. These proteins are characterized by the presence of two sets of ribonucleoprotein consensus sequence (RNP-CS) that contain conserved motifs, RNP1 and RNP2, originally desc
Synonyms:	FLJ36544
Note:	Immunogen Sequence Homology: Dog: 100%; Pig: 100%; Human: 100%; Rabbit: 100%; Guinea pig: 100%; Rat: 93%; Horse: 93%; Mouse: 92%; Bovine: 92%



[View online »](#)

Product images:



WB Suggested Anti-RBMS3 Antibody Titration:
0.2-1 ug/ml; ELISA Titer: 1: 62500; Positive
Control: OVCAR-3 cell lysate