

Product datasheet for **TA345696**

EXOSC10 Rabbit Polyclonal Antibody

Product data:

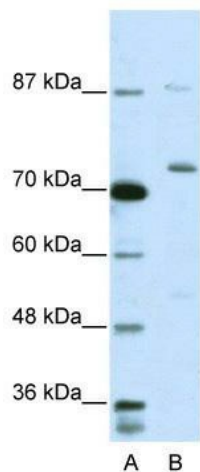
Product Type:	Primary Antibodies
Applications:	IHC, WB
Recommended Dilution:	WB, IHC
Reactivity:	Human
Host:	Rabbit
Isotype:	IgG
Clonality:	Polyclonal
Immunogen:	The immunogen for anti-EXOSC10 antibody: synthetic peptide directed towards the C terminal of human EXOSC10. Synthetic peptide located within the following region: FAGNSKSKVSSQFDPNKQTPSGKKCIAAKKIKQSVGNKSMSFPTGKSDRG
Formulation:	Liquid. Purified antibody supplied in 1x PBS buffer with 0.09% (w/v) sodium azide and 2% sucrose. <i>Note that this product is shipped as lyophilized powder to China customers.</i>
Purification:	Protein A purified
Conjugation:	Unconjugated
Storage:	Store at -20°C as received.
Stability:	Stable for 12 months from date of receipt.
Predicted Protein Size:	97 kDa
Gene Name:	exosome component 10
Database Link:	NP_001001998 Entrez Gene 5394 Human Q01780
Background:	EXOSC10 contains 1 HRDC domain and 1 3'-5' exonuclease domain. Antibodies against PM/SCL are found in patients with polymyositis and/or scleroderma.
Synonyms:	p2; p3; p4; PM; PM-Scl; PMSCL; PMSCL2; RRP6; Rrp6p; Scl-100
Note:	Immunogen Sequence Homology: Human: 100%; Horse: 93%; Dog: 86%; Pig: 86%; Rat: 86%; Mouse: 86%; Rabbit: 86%; Guinea pig: 86%; Bovine: 79%



[View online »](#)

Protein Pathways: RNA degradation

Product images:



WB Suggested Anti-EXOSC10 Antibody Titration: 5.0 ug/ml; ELISA Titer: 1: 62500; Positive Control: Jurkat cell lysate. EXOSC10 is supported by BioGPS gene expression data to be expressed in Jurkat



Rabbit Anti-EXOSC10 Antibody; Paraffin Embedded Tissue: Human Intestine; Cellular Data: Epithelial cells of intestinal villas; Antibody Concentration: 4.0-8.0 ug/ml; Magnification: 400X