

Product datasheet for **TA345690**

RPL13 Rabbit Polyclonal Antibody

Product data:

Product Type:	Primary Antibodies
Applications:	IHC, WB
Recommended Dilution:	WB
Reactivity:	Human
Host:	Rabbit
Isotype:	IgG
Clonality:	Polyclonal
Immunogen:	The immunogen for anti-RPL13 antibody: synthetic peptide directed towards the C terminal of human RPL13. Synthetic peptide located within the following region: KKEKARVITEEEEKNFKAFASLRMARANARLFGIRAKRAKEAAEQDVEKKK
Formulation:	Liquid. Purified antibody supplied in 1x PBS buffer with 0.09% (w/v) sodium azide and 2% sucrose. <i>Note that this product is shipped as lyophilized powder to China customers.</i>
Purification:	Affinity Purified
Conjugation:	Unconjugated
Storage:	Store at -20°C as received.
Stability:	Stable for 12 months from date of receipt.
Predicted Protein Size:	24 kDa
Gene Name:	ribosomal protein L13
Database Link:	NP_000968 Entrez Gene 6137 Human P26373



[View online »](#)

Background:

Ribosomes, the organelles that catalyze protein synthesis, consist of a small 40S subunit and a large 60S subunit. Together these subunits are composed of 4 RNA species and approximately 80 structurally distinct proteins. RPL13 is a ribosomal protein that is a component of the 60S subunit. The protein belongs to the L13E family of ribosomal proteins. It is located in the cytoplasm. This gene is expressed at significantly higher levels in benign breast lesions than in breast carcinomas. Ribosomes, the organelles that catalyze protein synthesis, consist of a small 40S subunit and a large 60S subunit. Together these subunits are composed of 4 RNA species and approximately 80 structurally distinct proteins. This gene encodes a ribosomal protein that is a component of the 60S subunit. The protein belongs to the L13E family of ribosomal proteins. It is located in the cytoplasm. This gene is expressed at significantly higher levels in benign breast lesions than in breast carcinomas. Transcript variants derived from alternative splicing and/or alternative polyadenylation exist; these variants encode the same protein. As is typical for genes encoding ribosomal proteins, there are multiple processed pseudogenes of this gene dispersed through the genome.

Synonyms:

BBC1; D16S44E; D16S444E; L13

Note:

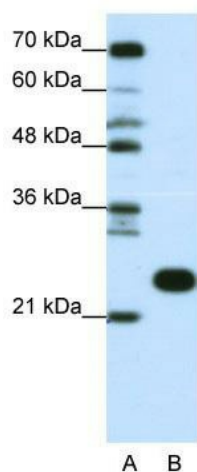
Immunogen Sequence Homology: Dog: 100%; Pig: 100%; Rat: 100%; Horse: 100%; Human: 100%; Mouse: 100%; Bovine: 100%; Rabbit: 100%; Zebrafish: 100%; Guinea pig: 100%

Protein Families:

Druggable Genome

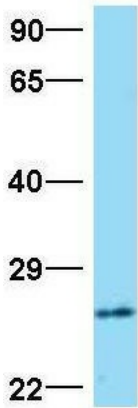
Protein Pathways:

Ribosome

Product images:

WB Suggested Anti-RPL13 Antibody Titration:
0.0625 ug/ml; ELISA Titer: 1: 62500; Positive
Control: Jurkat cell lysate

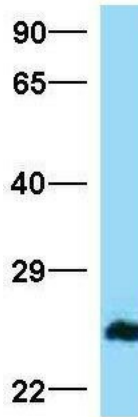
RPL13



Rabbit Anti-RPL13
 Sample Type: Human MCF7
 Antibody Concentration: 1ug/mL

Host: Rabbit; Target Name: RPL13; Sample Tissue: MCF7; Antibody Dilution: 1.0 ug/ml. RPL13 is strongly supported by BioGPS gene expression data to be expressed in MCF7

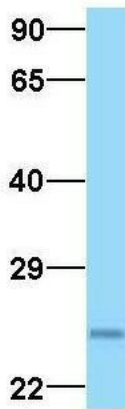
RPL13



Rabbit Anti-RPL13
 Sample Type: Human Fetal Liver
 Antibody Concentration: 1ug/mL

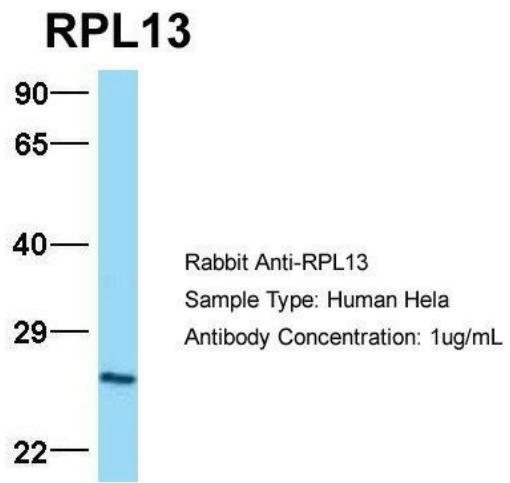
Host: Rabbit; Target Name: RPL13; Sample Tissue: Human Fetal Liver; Antibody Dilution: 1.0 ug/ml

RPL13

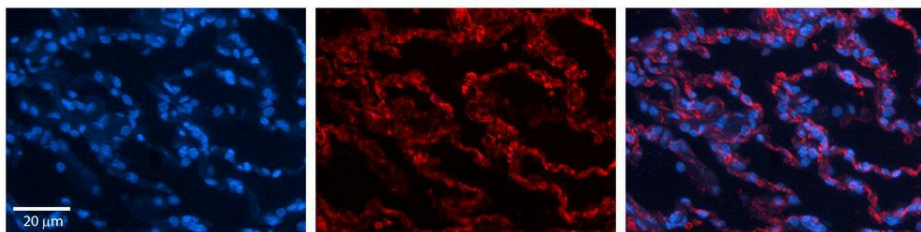


Rabbit Anti-RPL13
 Sample Type: Human 293T
 Antibody Concentration: 1ug/mL

Host: Rabbit; Target Name: RPL13; Sample Tissue: 293T; Antibody Dilution: 1.0 ug/ml. RPL13 is strongly supported by BioGPS gene expression data to be expressed in Human HEK293T cells



Host: Rabbit; Target Name: RPL13; Sample Tissue: HeLa; Antibody Dilution: 1.0 ug/ml. There is BioGPS gene expression data showing that RPL13 is expressed in HeLa



Rabbit Anti-RPL13 Antibody; Formalin Fixed Paraffin Embedded Tissue: Human Lung Tissue; Observed Staining: Cytoplasmic in alveolar mostly type I cells; Primary Antibody Concentration: 1: 100; Other Working Concentrations: 1/600; Secondary Antibody: Donkey anti-Rabbit-Cy3; Secondary Antibody Concentration: 1: 200; Magnification: 20X; Exposure Time: 0.5-2.0 sec;