

Product datasheet for **TA345687**

RPL6 Rabbit Polyclonal Antibody

Product data:

Product Type:	Primary Antibodies
Applications:	WB
Recommended Dilution:	WB
Reactivity:	Human
Host:	Rabbit
Isotype:	IgG
Clonality:	Polyclonal
Immunogen:	The immunogen for anti-RPL6 antibody: synthetic peptide directed towards the N terminal of human RPL6. Synthetic peptide located within the following region: AGEKVEKPDTKKPEAKKVDAGGKVKKGNLAKKPKKGKPHCSRNPVLV
Formulation:	Liquid. Purified antibody supplied in 1x PBS buffer with 0.09% (w/v) sodium azide and 2% sucrose. <i>Note that this product is shipped as lyophilized powder to China customers.</i>
Purification:	Protein A purified
Conjugation:	Unconjugated
Storage:	Store at -20°C as received.
Stability:	Stable for 12 months from date of receipt.
Predicted Protein Size:	32 kDa
Gene Name:	ribosomal protein L6
Database Link:	NP_001019833 Entrez Gene 6128 Human Q02878



[View online »](#)

Background:

RPL6 is a ribosomal protein that is a component of the 60S subunit. RPL6 belongs to the L6E family of ribosomal proteins. It is located in the cytoplasm. The protein can bind specifically to domain C of the tax-responsive enhancer element of human T-cell leukemia virus type 1, and it has been suggested that the protein may participate in tax-mediated transactivation of transcription. As is typical for genes encoding ribosomal proteins, there are multiple processed pseudogenes of this gene dispersed through the genome. Ribosomes, the organelles that catalyze protein synthesis, consist of a small 40S subunit and a large 60S subunit. Together these subunits are composed of 4 RNA species and approximately 80 structurally distinct proteins. This gene encodes a ribosomal protein that is a component of the 60S subunit. The protein belongs to the L6E family of ribosomal proteins. It is located in the cytoplasm. The protein can bind specifically to domain C of the tax-responsive enhancer element of human T-cell leukemia virus type 1, and it has been suggested that the protein may participate in tax-mediated transactivation of transcription. As is typical for genes encoding ribosomal proteins, there are multiple processed pseudogenes of this gene dispersed through the genome. Two alternatively spliced transcript variants encoding the same protein have been found for this gene.

Synonyms:

L6; SHUJUN-2; TAXREB107; TXREB1

Note:

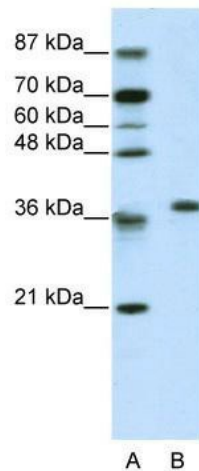
Immunogen Sequence Homology: Dog: 100%; Pig: 100%; Human: 100%; Bovine: 100%; Guinea pig: 100%; Mouse: 87%; Horse: 86%; Rat: 85%

Protein Families:

Transcription Factors

Protein Pathways:

Ribosome

Product images:

WB Suggested Anti-RPL6 Antibody Titration: 2.5 ug/ml; ELISA Titer: 1: 62500; Positive Control: Jurkat cell lysate. RPL6 is supported by BioGPS gene expression data to be expressed in Jurkat