

Product datasheet for **TA345685**

RPL9 Rabbit Polyclonal Antibody

Product data:

Product Type:	Primary Antibodies
Applications:	WB
Recommended Dilution:	WB
Reactivity:	Human
Host:	Rabbit
Isotype:	IgG
Clonality:	Polyclonal
Immunogen:	The immunogen for anti-RPL9 antibody: synthetic peptide directed towards the C terminal of human RPL9. Synthetic peptide located within the following region: GVACSVSQAQKDELILEGNDIELVSNAAAIQQATTVKNKDIRKFLDGIY
Formulation:	Liquid. Purified antibody supplied in 1x PBS buffer with 0.09% (w/v) sodium azide and 2% sucrose. <i>Note that this product is shipped as lyophilized powder to China customers.</i>
Purification:	Affinity Purified
Conjugation:	Unconjugated
Storage:	Store at -20°C as received.
Stability:	Stable for 12 months from date of receipt.
Predicted Protein Size:	21 kDa
Gene Name:	ribosomal protein L9
Database Link:	NP_000652 Entrez Gene 6133 Human P32969



[View online »](#)

Background:

RPL9 is a ribosomal protein that is a component of the 60S subunit. RPL9 belongs to the L6P family of ribosomal proteins. It is located in the cytoplasm. As is typical for genes encoding ribosomal proteins, there are multiple processed pseudogenes of this gene dispersed through the genome. Ribosomes, the organelles that catalyze protein synthesis, consist of a small 40S subunit and a large 60S subunit. Together these subunits are composed of 4 RNA species and approximately 80 structurally distinct proteins. This gene encodes a ribosomal protein that is a component of the 60S subunit. The protein belongs to the L6P family of ribosomal proteins. It is located in the cytoplasm. As is typical for genes encoding ribosomal proteins, there are multiple processed pseudogenes of this gene dispersed through the genome. Two alternatively spliced transcript variants encoding the same protein have been found for this gene.

Synonyms:

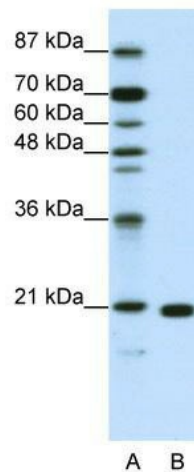
L9; NPC-A-16

Note:

Immunogen Sequence Homology: Dog: 100%; Pig: 100%; Rat: 100%; Horse: 100%; Human: 100%; Mouse: 100%; Bovine: 100%; Rabbit: 100%; Zebrafish: 100%; Guinea pig: 100%

Protein Pathways:

Ribosome

Product images:

WB Suggested Anti-RPL9 Antibody Titration: 1.25 ug/ml; ELISA Titer: 1: 312500; Positive Control: Jurkat cell lysate. RPL9 is supported by BioGPS gene expression data to be expressed in Jurkat