

## Product datasheet for **TA345683**

### PHAP1 (ANP32A) Rabbit Polyclonal Antibody

#### Product data:

Product Type:	Primary Antibodies
Applications:	IHC, WB
Recommended Dilution:	WB, IHC
Reactivity:	Human
Host:	Rabbit
Isotype:	IgG
Clonality:	Polyclonal
Immunogen:	The immunogen for anti-ANP32A antibody: synthetic peptide directed towards the N terminal of human ANP32A. Synthetic peptide located within the following region: MEMGRRIHLELRNRTPSDVKELVLDNSRSNEGKLEGLTDEFEELEFLSTI
Formulation:	Liquid. Purified antibody supplied in 1x PBS buffer with 0.09% (w/v) sodium azide and 2% sucrose. <i>Note that this product is shipped as lyophilized powder to China customers.</i>
Purification:	Protein A purified
Conjugation:	Unconjugated
Storage:	Store at -20°C as received.
Stability:	Stable for 12 months from date of receipt.
Predicted Protein Size:	29 kDa
Gene Name:	acidic nuclear phosphoprotein 32 family member A
Database Link:	<a href="#">NP_006296</a> <a href="#">Entrez Gene 8125 Human</a> <a href="#">P39687</a>
Background:	ANP32A is a novel potent heat-stable inhibitor protein of protein phosphatase 2A. It may play a key role in self-renewing cell populations where it may act in the nucleus to limit their sensitivity to transformation. Being a tumor suppressor, ANP32A represses cell growth through inhibition of transcription by blocking acetylation and phosphorylation of histone H3 and initiating its proapoptotic activity.
Synonyms:	C15orf1; HPPCn; I1PP2A; LANP; MAPM; PHAP1; PHAPI; PP32

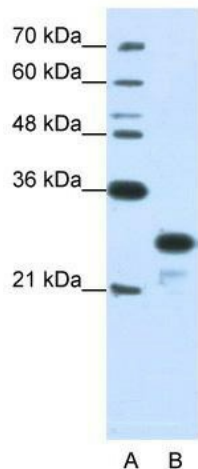


[View online »](#)

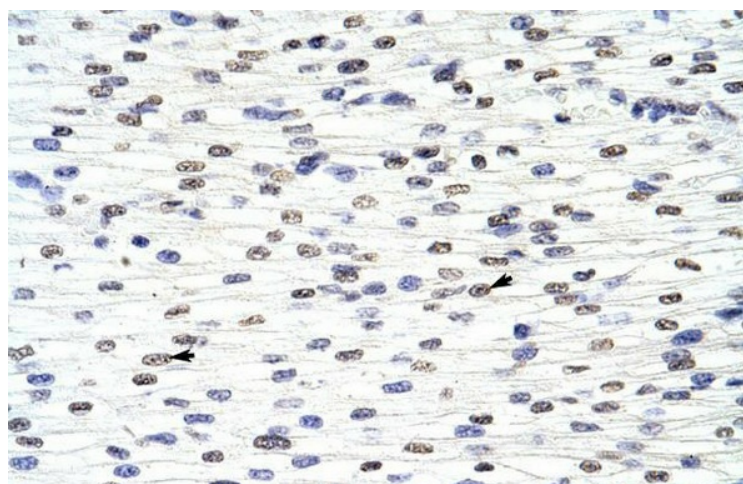
**Note:** Immunogen Sequence Homology: Human: 100%; Pig: 93%; Horse: 93%; Bovine: 93%; Rabbit: 93%; Zebrafish: 93%; Dog: 86%; Rat: 86%; Guinea pig: 86%; Mouse: 79%; Sheep: 77%

**Protein Families:** Druggable Genome, Stem cell - Pluripotency

**Product images:**



WB Suggested Anti-ANP32A Antibody Titration: 1.25 ug/ml; Positive Control: Jurkat cell lysate. ANP32A is supported by BioGPS gene expression data to be expressed in Jurkat



Rabbit Anti-ANP32A Antibody; Paraffin Embedded Tissue: Human Heart; Cellular Data: Myocardial cells; Antibody Concentration: 4.0-8.0 ug/ml; Magnification: 400X