

Product datasheet for **TA345682**

PHAP1 (ANP32A) Rabbit Polyclonal Antibody

Product data:

Product Type:	Primary Antibodies
Applications:	IHC, WB
Recommended Dilution:	WB, IHC
Reactivity:	Human, Mouse
Host:	Rabbit
Isotype:	IgG
Clonality:	Polyclonal
Immunogen:	The immunogen for anti-ANP32A antibody: synthetic peptide directed towards the middle region of human ANP32A. Synthetic peptide located within the following region: FNCEVTNLNDYRENVFKLLPQLTYLDGYDRDDKEAPDSDAEGYVEGLDDE
Formulation:	Liquid. Purified antibody supplied in 1x PBS buffer with 0.09% (w/v) sodium azide and 2% sucrose. <i>Note that this product is shipped as lyophilized powder to China customers.</i>
Purification:	Affinity Purified
Conjugation:	Unconjugated
Storage:	Store at -20°C as received.
Stability:	Stable for 12 months from date of receipt.
Predicted Protein Size:	29 kDa
Gene Name:	acidic nuclear phosphoprotein 32 family member A
Database Link:	NP_006296 Entrez Gene 11737 Mouse Entrez Gene 8125 Human P39687
Background:	ANP32A is a novel potent heat-stable inhibitor protein of protein phosphatase 2A. It may play a key role in self-renewing cell populations where it may act in the nucleus to limit their sensitivity to transformation. Being a tumor suppressor, ANP32A represses cell growth through inhibition of transcription by blocking acetylation and phosphorylation of histone H3 and initiating its proapoptotic activity.
Synonyms:	C15orf1; HPPCn; I1PP2A; LANP; MAPM; PHAP1; PHAPI; PP32

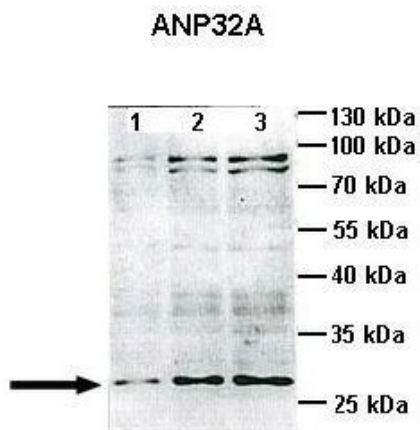


[View online »](#)

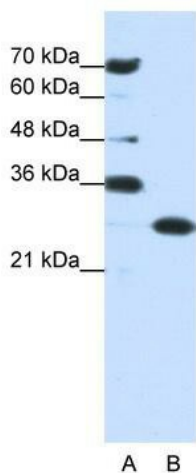
Note: Immunogen Sequence Homology: Dog: 100%; Pig: 100%; Rat: 100%; Horse: 100%; Human: 100%; Bovine: 100%; Guinea pig: 100%; Mouse: 93%; Rabbit: 93%; Sheep: 86%; Zebrafish: 86%

Protein Families: Druggable Genome, Stem cell - Pluripotency

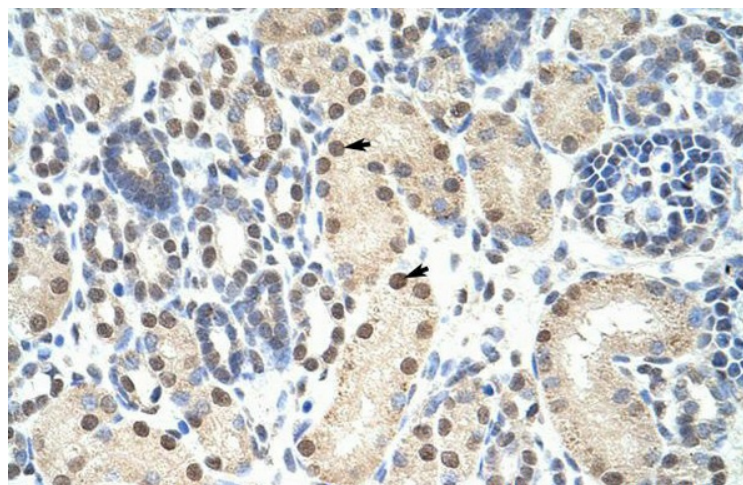
Product images:



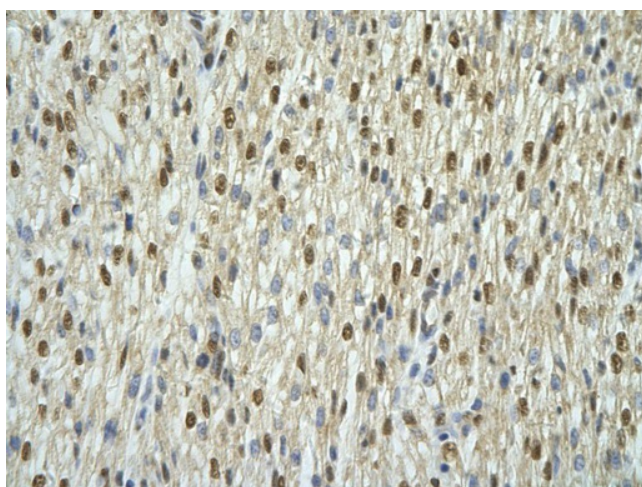
Lanes: Lane 1: 10ug mouse cortex brain lysate; Lane 2: 25ug mouse cortex brain lysate; Lane 3: 40ug mouse cortex brain lysate; Primary Antibody Dilution: 1: 1000; Secondary Antibody: Anti-rabbit HRP; Secondary Antibody Dilution: 1: 2000; Gene Name: ANP32A;



WB Suggested Anti-ANP32A Antibody Titration: 0.2-1 ug/ml; ELISA Titer: 1: 312500; Positive Control: Jurkat cell lysate. ANP32A is supported by BioGPS gene expression data to be expressed in Jurkat



Rabbit Anti-ANP32A Antibody; Paraffin Embedded Tissue: Human Kidney; Cellular Data: Epithelial cells of renal tubule; Antibody Concentration: 4.0-8.0 ug/ml; Magnification: 400X



Rabbit Anti-ANP32A antibody; Paraffin Embedded Tissue: Human Heart cell Cellular Data: cardiac cell of renal tubule; Antibody Concentration: 4.0-8.0 ug/ml; Magnification: 400X