

## Product datasheet for **TA345680**

### PRMT1 Rabbit Polyclonal Antibody

#### Product data:

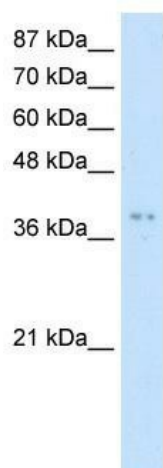
Product Type:	Primary Antibodies
Applications:	IHC, WB
Recommended Dilution:	WB, IHC
Reactivity:	Human
Host:	Rabbit
Isotype:	IgG
Clonality:	Polyclonal
Immunogen:	The immunogen for anti-PRMT1 antibody: synthetic peptide directed towards the middle region of human PRMT1. Synthetic peptide located within the following region: ESMLNTVLYARDKWLAPDGLIFPD RATLYVTAIEDRQYKDYKIHWWENVY
Formulation:	Liquid. Purified antibody supplied in 1x PBS buffer with 0.09% (w/v) sodium azide and 2% sucrose. <i>Note that this product is shipped as lyophilized powder to China customers.</i>
Purification:	Protein A purified
Conjugation:	Unconjugated
Storage:	Store at -20°C as received.
Stability:	Stable for 12 months from date of receipt.
Predicted Protein Size:	40 kDa
Gene Name:	protein arginine methyltransferase 1
Database Link:	<a href="#">NP_001527</a> <a href="#">Entrez Gene 3276 Human</a> <a href="#">Q99873</a>
Background:	PRMT1 is a protein arginine methyltransferase that functions as a histone methyltransferase specific for H4. The HRMT1L2 gene encodes a protein arginine methyltransferase that functions as a histone methyltransferase specific for H4 (see MIM 602822). [supplied by OMIM]
Synonyms:	ANM1; HCP1; HRMT1L2; IR1B4



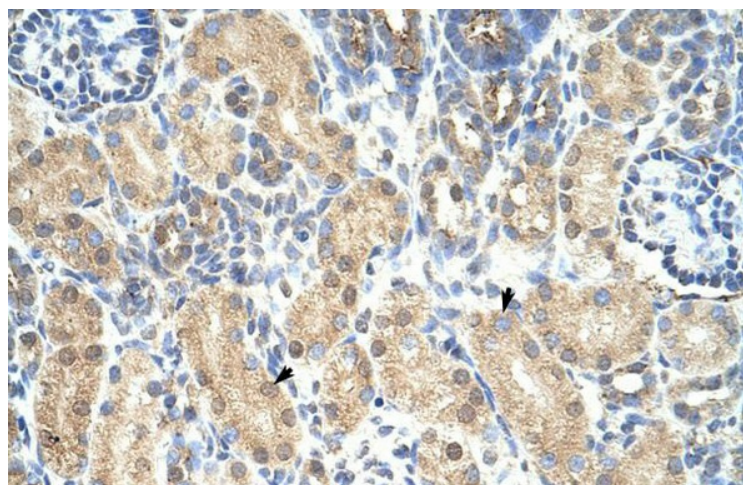
[View online »](#)

**Note:** Immunogen Sequence Homology: Dog: 100%; Pig: 100%; Rat: 100%; Horse: 100%; Human: 100%; Mouse: 100%; Bovine: 100%; Rabbit: 100%; Zebrafish: 100%; Guinea pig: 100%

### Product images:



WB Suggested Anti-PRMT1 Antibody Titration: 5.0 ug/ml; ELISA Titer: 1: 1562500; Positive Control: Jurkat cell lysate



Rabbit Anti-PRMT1 Antibody; Paraffin Embedded Tissue: Human Kidney; Cellular Data: Epithelial cells of renal tubule; Antibody Concentration: 4.0-8.0 ug/ml; Magnification: 400X