

Product datasheet for **TA345679**

PRMT8 Rabbit Polyclonal Antibody

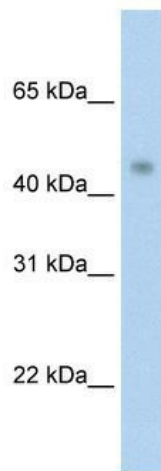
Product data:

Product Type:	Primary Antibodies
Applications:	WB
Recommended Dilution:	WB
Reactivity:	Human
Host:	Rabbit
Isotype:	IgG
Clonality:	Polyclonal
Immunogen:	The immunogen for anti-PRMT8 antibody: synthetic peptide directed towards the C terminal of human PRMT8. Synthetic peptide located within the following region: YLEDYLTVRRGEEIYGTISMKPNNAKNVRDLDFVLDLDFKQQLCETSVSND
Formulation:	Liquid. Purified antibody supplied in 1x PBS buffer with 0.09% (w/v) sodium azide and 2% sucrose. <i>Note that this product is shipped as lyophilized powder to China customers.</i>
Purification:	Protein A purified
Conjugation:	Unconjugated
Storage:	Store at -20°C as received.
Stability:	Stable for 12 months from date of receipt.
Predicted Protein Size:	43 kDa
Gene Name:	protein arginine methyltransferase 8
Database Link:	NP_062828 Entrez Gene 56341 Human Q9NR22
Background:	PRMT8 probably methylates the guanidino nitrogens of arginyl residues in some proteins.
Synonyms:	HRMT1L3; HRMT1L4
Note:	Immunogen Sequence Homology: Dog: 100%; Pig: 100%; Rat: 100%; Horse: 100%; Human: 100%; Mouse: 100%; Bovine: 100%; Rabbit: 100%; Guinea pig: 100%; Zebrafish: 92%
Protein Families:	Druggable Genome



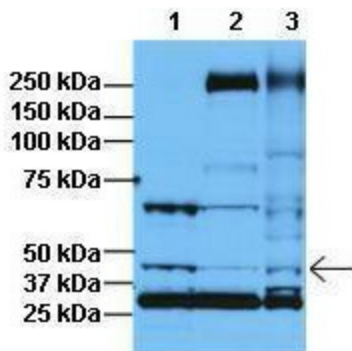
[View online »](#)

Product images:



WB Suggested Anti-PRMT8 Antibody Titration: 2.5 ug/ml; ELISA Titer: 1: 312500; Positive Control: Transfected 293T

PRMT8



Lanes: 1: 30ug HeLa lysate, 2: 30ug HFF lysate, 3: 30ug U2OS lysate; Primary Antibody Dilution: 1: 1000; Secondary Antibody: Anti-rabbit HRP; Secondary Antibody Dilution: 1: 5000; Gene Name: PRMT8