

## Product datasheet for **TA345678**

### PRMT7 Rabbit Polyclonal Antibody

#### Product data:

Product Type:	Primary Antibodies
Applications:	WB
Recommended Dilution:	WB
Reactivity:	Human
Host:	Rabbit
Isotype:	IgG
Clonality:	Polyclonal
Immunogen:	The immunogen for anti-PRMT7 antibody: synthetic peptide directed towards the N terminal of human PRMT7. Synthetic peptide located within the following region: MKIFCSRANPTTGSVEWLEEDEHYDHYHQEIARSSYADMLHDKDRNVKYYQ
Formulation:	Liquid. Purified antibody supplied in 1x PBS buffer with 0.09% (w/v) sodium azide and 2% sucrose. <i>Note that this product is shipped as lyophilized powder to China customers.</i>
Purification:	Affinity Purified
Conjugation:	Unconjugated
Storage:	Store at -20°C as received.
Stability:	Stable for 12 months from date of receipt.
Predicted Protein Size:	78 kDa
Gene Name:	protein arginine methyltransferase 7
Database Link:	<a href="#">NP_061896</a> <a href="#">Entrez Gene 54496 Human</a> <a href="#">Q9NVM4</a>



[View online »](#)

**Background:**

Arginine methylation is an apparently irreversible protein modification catalyzed by arginine methyltransferases, such as PMT7, using S-adenosylmethionine (AdoMet) as the methyl donor. Arginine methylation is implicated in signal transduction, RNA transport, and RNA splicing. Arginine methylation is an apparently irreversible protein modification catalyzed by arginine methyltransferases, such as PMT7, using S-adenosylmethionine (AdoMet) as the methyl donor. Arginine methylation is implicated in signal transduction, RNA transport, and RNA splicing (Miranda et al., 2004 [PubMed 15044439]). [supplied by OMIM]

**Synonyms:**

FLJ10640; KIAA1933

**Note:**

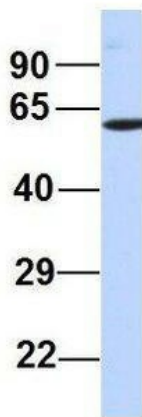
Immunogen Sequence Homology: Dog: 100%; Rat: 100%; Horse: 100%; Human: 100%; Mouse: 100%; Bovine: 100%; Rabbit: 100%; Pig: 92%; Guinea pig: 92%; Zebrafish: 86%

**Protein Families:**

Druggable Genome

**Product images:**

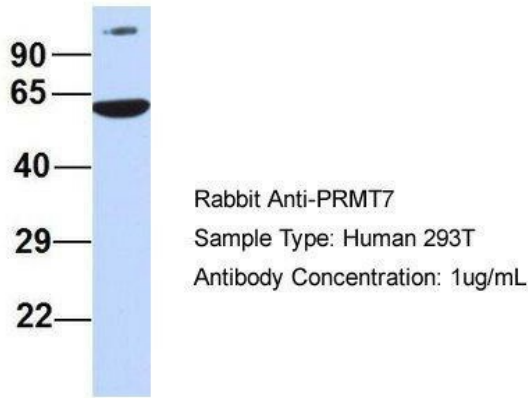

WB Suggested Anti-PRMT7 Antibody Titration:  
0.2-1 ug/ml; ELISA Titer: 1: 1562500; Positive  
Control: Human Liver

**PRMT7**


Rabbit Anti-PRMT7  
Sample Type: Human Adult  
Placenta  
Antibody Concentration: 1ug/mL

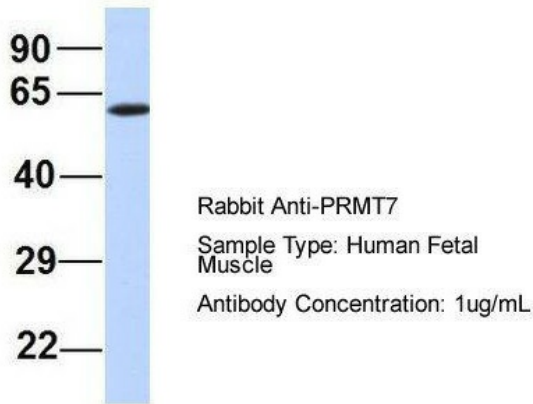
Host: Rabbit; Target Name: PRMT7; Sample  
Tissue: Human Adult Placenta; Antibody Dilution:  
1.0 ug/ml

## PRMT7



Host: Rabbit; Target Name: PRMT7; Sample  
Tissue: Human 293T; Antibody Dilution: 1.0 ug/ml

## PRMT7



Host: Rabbit; Target Name: PRMT7; Sample  
Tissue: Human Fetal Muscle; Antibody Dilution:  
1.0 ug/ml