

## Product datasheet for **TA345677**

### PRMT6 Rabbit Polyclonal Antibody

#### Product data:

|                         |   |
|-------------------------|---|
| Product Type:           | Primary Antibodies  |
| Applications:           | 10k-ChIP, WB  |
| Recommended Dilution:   | WB  |
| Reactivity:             | Human   |
| Host:                   | Rabbit  |
| Isotype:                | IgG   |
| Clonality:              | Polyclonal  |
| Immunogen:              | The immunogen for anti-PRMT6 antibody: synthetic peptide directed towards the middle region of human PRMT6. Synthetic peptide located within the following region:<br>FRCSYGSAPMHGFAIWFQVTFPGGESEKPLVLSTSPFHPATHWKQALLY |
| Formulation:            | Liquid. Purified antibody supplied in 1x PBS buffer with 0.09% (w/v) sodium azide and 2% sucrose.<br><i>Note that this product is shipped as lyophilized powder to China customers.</i>                                 |
| Purification:           | Affinity Purified   |
| Conjugation:            | Unconjugated  |
| Storage:                | Store at -20°C as received.   |
| Stability:              | Stable for 12 months from date of receipt.  |
| Predicted Protein Size: | 35 kDa  |
| Gene Name:              | protein arginine methyltransferase 6  |
| Database Link:          | <a href="#">NP_060607</a><br><a href="#">Entrez Gene 55170 Human</a><br><a href="#">Q96LA8</a>  |



[View online »](#)

**Background:**

Protein arginine N-methyltransferases, such as PRMT6, catalyze the sequential transfer of a methyl group from S-adenosyl-L-methionine to the side chain nitrogens of arginine residues within proteins to form methylated arginine derivatives and S-adenosyl-L-homocysteine. Protein arginine N-methyltransferases, such as PRMT6, catalyze the sequential transfer of a methyl group from S-adenosyl-L-methionine to the side chain nitrogens of arginine residues within proteins to form methylated arginine derivatives and S-adenosyl-L-homocysteine. [supplied by OMIM]

**Synonyms:**

HRMT1L6

**Note:**

Immunogen Sequence Homology: Rat: 100%; Human: 100%; Pig: 93%; Horse: 93%; Mouse: 93%; Guinea pig: 93%; Dog: 86%; Bovine: 86%

**Protein Families:**

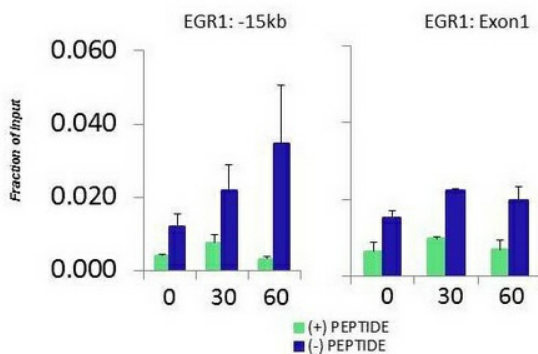
Druggable Genome

**Product images:**



WB Suggested Anti-PRMT6 Antibody Titration: 0.2-1 ug/ml; ELISA Titer: 1: 1562500; Positive Control: 293T cell lysate

**HCT116 serum response  
PRMT6  
Matrix-ChIP**



Quiescent human colon carcinoma HCT116 cultures were treated with 10% FBS for three time points (0, 15, 30min) or (0, 30, 60min) were used in Matrix-ChIP and real-time PCR assays at EGR1 gene (Exon1) and 15kb upstream site.