

Product datasheet for **TA345676**

GAPDHS Rabbit Polyclonal Antibody

Product data:

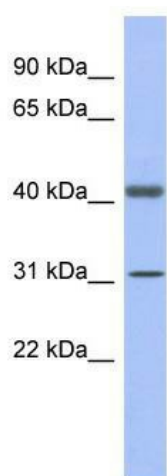
Product Type:	Primary Antibodies
Applications:	WB
Recommended Dilution:	WB
Reactivity:	Human
Host:	Rabbit
Isotype:	IgG
Clonality:	Polyclonal
Immunogen:	The immunogen for anti-GAPDHS antibody: synthetic peptide directed towards the N terminal of human GAPDHS. Synthetic peptide located within the following region: PFIDPEYMVYMFKYDSTHGRYKGSVEFRNGQLVWDNHEISVYQCKEPKQI
Formulation:	Liquid. Purified antibody supplied in 1x PBS buffer with 0.09% (w/v) sodium azide and 2% sucrose. <i>Note that this product is shipped as lyophilized powder to China customers.</i>
Purification:	Affinity Purified
Conjugation:	Unconjugated
Storage:	Store at -20°C as received.
Stability:	Stable for 12 months from date of receipt.
Predicted Protein Size:	44 kDa
Gene Name:	glyceraldehyde-3-phosphate dehydrogenase, spermatogenic
Database Link:	NP_055179 Entrez Gene 26330 Human O14556
Background:	GAPDHS is a protein belonging to the glyceraldehyde-3-phosphate dehydrogenase family of enzymes that play an important role in carbohydrate metabolism. Like its somatic cell counterpart, this sperm-specific enzyme functions in a nicotinamide adenine dinuc
Synonyms:	GAPD2; GAPDH-2; GAPDS; HEL-S-278; HSD-35
Note:	Immunogen Sequence Homology: Human: 100%; Dog: 92%; Horse: 85%; Pig: 79%; Mouse: 79%; Guinea pig: 79%; Rat: 77%; Rabbit: 77%



[View online »](#)

Protein Families: Druggable Genome

Product images:



WB Suggested Anti-GAPDHS Antibody Titration:
0.2-1 ug/ml; ELISA Titer: 1: 312500; Positive
Control: Human Spleen