

Product datasheet for **TA345675**

PRMT5 Rabbit Polyclonal Antibody

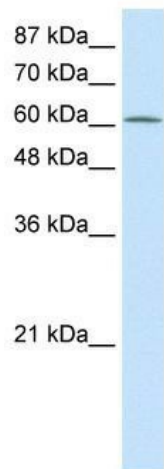
Product data:

Product Type:	Primary Antibodies
Applications:	IHC, WB
Recommended Dilution:	WB, IHC
Reactivity:	Human
Host:	Rabbit
Isotype:	IgG
Clonality:	Polyclonal
Immunogen:	The immunogen for anti-PRMT5 antibody: synthetic peptide directed towards the N terminal of human PRMT5. Synthetic peptide located within the following region: FDFLCMPVHFHPRFKREFIQEPAKNRPGPQTRSDLLLSGRDWNTLIVGKLS
Formulation:	Liquid. Purified antibody supplied in 1x PBS buffer with 0.09% (w/v) sodium azide and 2% sucrose. <i>Note that this product is shipped as lyophilized powder to China customers.</i>
Purification:	Protein A purified
Conjugation:	Unconjugated
Storage:	Store at -20°C as received.
Stability:	Stable for 12 months from date of receipt.
Predicted Protein Size:	68 kDa
Gene Name:	protein arginine methyltransferase 5
Database Link:	NP_001034708 Entrez Gene 10419 Human O14744

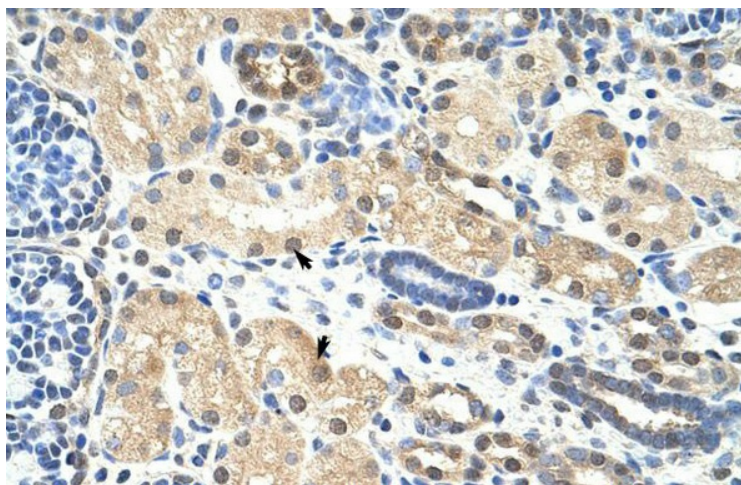


[View online »](#)

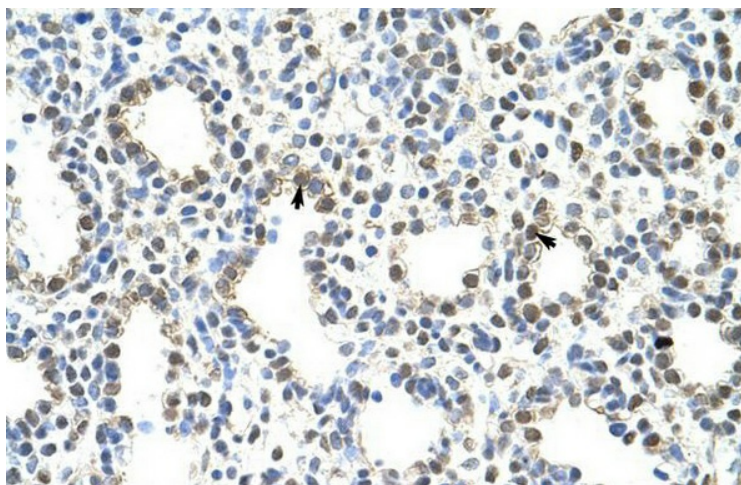
- Background:** PRMT5 methylates specific arginine residues in the small nuclear ribonucleoproteins Sm D1 and Sm D3 to monomethylarginine and to symmetrical dimethylarginines (sDMAs). It methylates SUPT5H. PRMT5 plays a role in the assembly of snRNP core particles and may play a role in cytokine-activated transduction pathways. It negatively regulates cyclin E1 promoter activity and cellular proliferation and May regulate the SUPT5H transcriptional elongation properties. It may be part of a pathway that is connected to a chloride current, possibly through cytoskeletal rearrangement. PRMT5 methylates histone H2A/H4 'Arg-3' during germ cell development and methylates histone H3 'Arg-8', which may repress transcription.
- Synonyms:** HRMT1L5; IBP72; JBP1; SKB1; SKB1Hs
- Note:** Immunogen Sequence Homology: Dog: 100%; Pig: 100%; Rat: 100%; Horse: 100%; Human: 100%; Mouse: 100%; Rabbit: 100%; Guinea pig: 100%; Bovine: 93%; Zebrafish: 77%
- Protein Families:** Stem cell - Pluripotency

Product images:

WB Suggested Anti-PRMT5 Antibody Titration: 2.5 ug/ml; ELISA Titer: 1: 62500; Positive Control: Jurkat cell lysate. PRMT5 is supported by BioGPS gene expression data to be expressed in Jurkat



Rabbit Anti-PRMT5 Antibody; Paraffin Embedded Tissue: Human Kidney; Cellular Data: Epithelial cells of renal tubule; Antibody Concentration: 4.0-8.0 ug/ml; Magnification: 400X



Rabbit Anti-PRMT5 Antibody; Paraffin Embedded Tissue: Human Lung; Cellular Data: Alveolar cells; Antibody Concentration: 4.0-8.0 ug/ml; Magnification: 400X