

## Product datasheet for **TA345673**

### HOMER1 Rabbit Polyclonal Antibody

#### Product data:

Product Type:	Primary Antibodies
Applications:	WB
Recommended Dilution:	WB
Reactivity:	Mouse, Human
Host:	Rabbit
Isotype:	IgG
Clonality:	Polyclonal
Immunogen:	The immunogen for anti-HOMER1 antibody: synthetic peptide directed towards the N terminal of human HOMER1. Synthetic peptide located within the following region: EKFQEFKEAARLAKEKSQEKMELTSTPSQESAGGDLQSPLTPESINGTDD
Formulation:	Liquid. Purified antibody supplied in 1x PBS buffer with 0.09% (w/v) sodium azide and 2% sucrose. <i>Note that this product is shipped as lyophilized powder to China customers.</i>
Purification:	Affinity Purified
Conjugation:	Unconjugated
Storage:	Store at -20°C as received.
Stability:	Stable for 12 months from date of receipt.
Predicted Protein Size:	39 kDa
Gene Name:	homer scaffolding protein 1
Database Link:	<a href="#">NP_004263</a> <a href="#">Entrez Gene 26556 Mouse</a> <a href="#">Entrez Gene 9456 Human</a> <a href="#">Q86YM7</a>
Background:	HOMER1 is a member of the homer family of dendritic proteins. Members of this family regulate group 1 metabotropic glutamate receptor function. This gene encodes a member of the homer family of dendritic proteins. Members of this family regulate group 1 metabotropic glutamate receptor function. This gene encodes a member of the homer family of dendritic proteins. Members of this family regulate group 1 metabotropic glutamate receptor function.



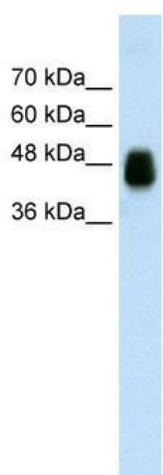
[View online »](#)

**Synonyms:** HOMER; HOMER1A; HOMER1B; HOMER1C; SYN47; Ves-1

**Note:** Immunogen Sequence Homology: Dog: 100%; Pig: 100%; Rat: 100%; Horse: 100%; Human: 100%; Mouse: 100%; Bovine: 100%; Rabbit: 100%

**Protein Families:** Druggable Genome

**Product images:**



WB Suggested Anti-HOMER1 Antibody Titration:  
0.0156 ug/ml; ELISA Titer: 1: 62500; Positive  
Control: Transfected 293T