

## Product datasheet for **TA345671**

### alpha Tubulin (TUBA4A) Rabbit Polyclonal Antibody

#### Product data:

Product Type:	Primary Antibodies
Applications:	WB
Recommended Dilution:	WB
Reactivity:	Human, Rat
Host:	Rabbit
Isotype:	IgG
Clonality:	Polyclonal
Immunogen:	The immunogen for anti-TUBA4A antibody: synthetic peptide directed towards the middle region of human TUBA4A. Synthetic peptide located within the following region: GGTGS <del>G</del> FTSLLMERLSVDY <del>G</del> KKSKLEFSIYPAPQVSTAVVEPYNSILTTH
Formulation:	Liquid. Purified antibody supplied in 1x PBS buffer with 0.09% (w/v) sodium azide and 2% sucrose. <i>Note that this product is shipped as lyophilized powder to China customers.</i>
Purification:	Affinity Purified
Conjugation:	Unconjugated
Storage:	Store at -20°C as received.
Stability:	Stable for 12 months from date of receipt.
Predicted Protein Size:	50 kDa
Gene Name:	tubulin alpha 4a
Database Link:	<a href="#">NP_005991</a> <a href="#">Entrez Gene 316531 RatEntrez Gene 7277 Human P68366</a>
Background:	Microtubules of the eukaryotic cytoskeleton perform essential and diverse functions and are composed of a heterodimer of alpha and beta tubulin. The genes encoding these microtubule constituents are part of the tubulin superfamily, which is composed of si
Synonyms:	ALS22; H2-ALPHA; TUBA1
Note:	Immunogen Sequence Homology: Dog: 100%; Pig: 100%; Rat: 100%; Human: 100%; Mouse: 100%; Sheep: 100%; Rabbit: 100%; Zebrafish: 100%

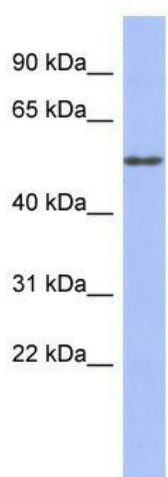


[View online »](#)

Protein Families: Druggable Genome

Protein Pathways: Gap junction, Pathogenic Escherichia coli infection

### Product images:



WB Suggested Anti-TUBA4A Antibody Titration:  
0.2-1 ug/ml; ELISA Titer: 1: 312500; Positive  
Control: Human Small Intestine