

Product datasheet for **TA345670**

alpha Tubulin (TUBA4A) Rabbit Polyclonal Antibody

Product data:

Product Type:	Primary Antibodies
Applications:	IHC, IP, WB
Recommended Dilution:	WB, IHC, IP
Reactivity:	Human, Mouse
Host:	Rabbit
Isotype:	IgG
Clonality:	Polyclonal
Immunogen:	The immunogen for anti-TUBA4A antibody: synthetic peptide directed towards the middle region of human TUBA4A. Synthetic peptide located within the following region: YAKRAFDVHWYVGGEGMEEGEFSEAREDMAALEKDYEEVIGIDSYEDEDEGEE
Formulation:	Liquid. Purified antibody supplied in 1x PBS buffer with 0.09% (w/v) sodium azide and 2% sucrose. <i>Note that this product is shipped as lyophilized powder to China customers.</i>
Purification:	Affinity Purified
Conjugation:	Unconjugated
Storage:	Store at -20°C as received.
Stability:	Stable for 12 months from date of receipt.
Predicted Protein Size:	50 kDa
Gene Name:	tubulin alpha 4a
Database Link:	NP_005991 Entrez Gene 22145 Mouse Entrez Gene 7277 Human P68366



[View online »](#)

Background:

Microtubules of the eukaryotic cytoskeleton perform essential and diverse functions and are composed of a heterodimer of alpha and beta tubulin. The genes encoding these microtubule constituents are part of the tubulin superfamily, which is composed of six distinct families. Genes from the alpha, beta and gamma tubulin families are found in all eukaryotes. The alpha and beta tubulins represent the major components of microtubules, while gamma tubulin plays a critical role in the nucleation of microtubule assembly. There are multiple alpha and beta tubulin genes and they are highly conserved among and between species. This gene encodes an alpha tubulin that is a highly conserved homolog of a rat testis-specific alpha tubulin. Microtubules of the eukaryotic cytoskeleton perform essential and diverse functions and are composed of a heterodimer of alpha and beta tubulin. The genes encoding these microtubule constituents are part of the tubulin superfamily, which is composed of six distinct families. Genes from the alpha, beta and gamma tubulin families are found in all eukaryotes. The alpha and beta tubulins represent the major components of microtubules, while gamma tubulin plays a critical role in the nucleation of microtubule assembly. There are multiple alpha and beta tubulin genes and they are highly conserved among and between species. This gene encodes an alpha tubulin that is a highly conserved homolog of a rat testis-specific alpha tubulin. Publication Note: This RefSeq record includes a subset of the publications that are available for this gene. Please see the Entrez Gene record to access additional publications.

Synonyms:

ALS22; H2-ALPHA; TUBA1

Note:

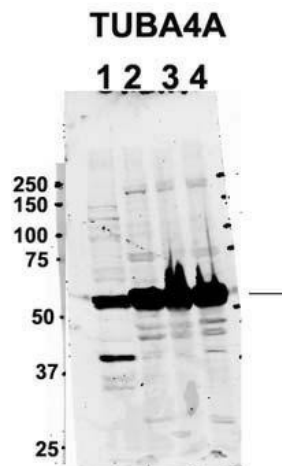
Immunogen Sequence Homology: Dog: 100%; Pig: 100%; Rat: 100%; Horse: 100%; Human: 100%; Mouse: 100%; Sheep: 100%; Bovine: 100%; Rabbit: 100%; Guinea pig: 100%

Protein Families:

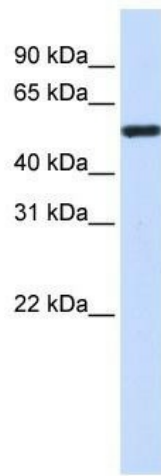
Druggable Genome

Protein Pathways:

Gap junction, Pathogenic Escherichia coli infection

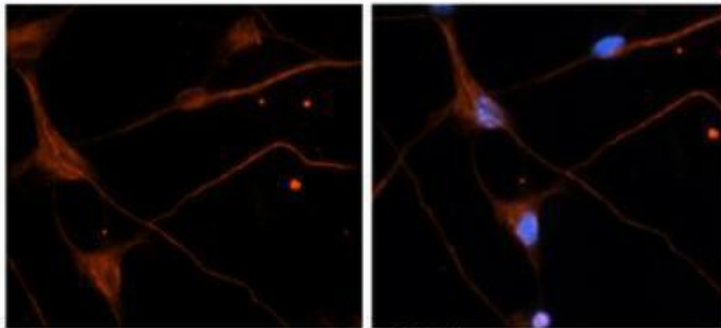
Product images:

Sample Type: 1. Human NT-2 cells (60ug); 2. and 3. mouse brain extracts (80ug); 4. rat brain extract (80ug); Primary Antibody Dilution: 2 ug/ml; Secondary Antibody: IRDye 800CW goat anti-rabbit from Li-COR Bioscience; Secondary Antibody Dilution: 1: 20, 000;



WB Suggested Anti-TUBA4A Antibody Titration:
0.2-1 ug/ml; ELISA Titer: 1: 12500; Positive
Control: Human Placenta

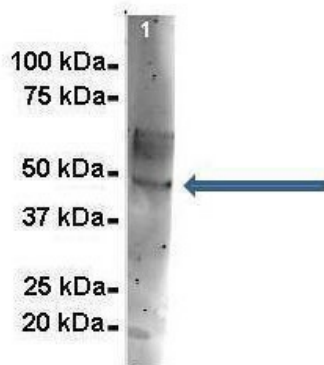
TUBA4A



Antibody--RED
DAPI--Blue

Sample Type: Mouse brain stem cells Primary
Antibody Dilution: 1: 500; Secondary Antibody:
Goat anti-rabbit Alexa-Fluor 594; Secondary
Antibody: ilution: 1: 1000; Color/Signal
Descriptions: TUBA4A: Red DAPI: Blue; Gene
Name: TUBA4A

TUBA4A



Amount and Sample Type: 500 ug mouse brain
homogenate; Amount of IP Antibody: 6 ug;
Primary Antibody: TUBA4A; Primary Antibody
Dilution: 1: 500; Secondary Antibody: Goat anti-
rabbit Alexa-Fluor 594; Secondary Antibody
Dilution: 1: 5000; Gene Name: TUBA4A;

User supplied image.

Ana C. for TA345670 on 06/02/2023:

IF staining of MDA-MB-231 cells. F-actin staining in red, nuclei in blue and alpha-tubulin in red.

Antibody Dilution: 1: 500

Secondary Antibody: Goat anti-rabbit Alexa-Fluor 488

Secondary Antibody: dilution: 1: 1000. F-actin staining with Alexa Fluor 594 Phalloidin 1:40

Color/Signal Descriptions: TUBA4A: green

F-actin: red DAPI: Blue

Gene Name: TUBA4A