

Product datasheet for **TA345669**

beta II Tubulin (TUBB2A) Rabbit Polyclonal Antibody

Product data:

Product Type:	Primary Antibodies
Applications:	WB
Recommended Dilution:	WB
Reactivity:	Human, Rat
Host:	Rabbit
Isotype:	IgG
Clonality:	Polyclonal
Immunogen:	The immunogen for anti-TUBB2A antibody: synthetic peptide directed towards the N terminal of human TUBB2A. Synthetic peptide located within the following region: MAKRSRSEDEDDLQYADHDYEVPPQKGLKLLWNRVKWTRDEDDKLLKLV
Formulation:	Liquid. Purified antibody supplied in 1x PBS buffer with 0.09% (w/v) sodium azide and 2% sucrose. <i>Note that this product is shipped as lyophilized powder to China customers.</i>
Purification:	Affinity Purified
Conjugation:	Unconjugated
Storage:	Store at -20°C as received.
Stability:	Stable for 12 months from date of receipt.
Predicted Protein Size:	50 kDa
Gene Name:	tubulin beta 2A class IIa
Database Link:	NP_001060 Entrez Gene 498736 RatEntrez Gene 7280 Human Q13885
Background:	TUBB2A belongs to the tubulin family. Tubulin is the major constituent of microtubules. It binds two moles of GTP, one at an exchangeable site on the beta chain and one at a non-exchangeable site on the alpha-chain.
Synonyms:	CDCBM5; dj40E16.7; TUBB; TUBB2



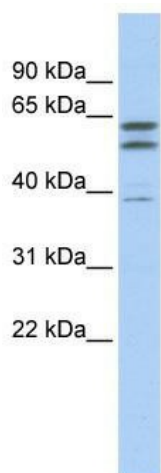
[View online »](#)

Note: Immunogen Sequence Homology: Dog: 100%; Pig: 100%; Rat: 100%; Horse: 100%; Human: 100%; Mouse: 100%; Sheep: 100%; Bovine: 100%; Rabbit: 100%; Guinea pig: 100%; Zebrafish: 86%

Protein Families: Druggable Genome

Protein Pathways: Gap junction, Pathogenic Escherichia coli infection

Product images:



WB Suggested Anti-TUBB2A Antibody Titration:
0.2-1 ug/ml; ELISA Titer: 1: 62500; Positive
Control: 721_B cell lysate