

Product datasheet for **TA345668**

beta II Tubulin (TUBB2A) Rabbit Polyclonal Antibody

Product data:

Product Type:	Primary Antibodies
Applications:	IHC, WB
Recommended Dilution:	IHC, WB
Reactivity:	Human
Host:	Rabbit
Isotype:	IgG
Clonality:	Polyclonal
Immunogen:	The immunogen for anti-TUBB2A antibody: synthetic peptide directed towards the middle region of human TUBB2A. Synthetic peptide located within the following region: AVNMVFPRLHFFMPGFAPLTSRGSQQYRALTVPELTQQMFDSKNMMAAC
Formulation:	Liquid. Purified antibody supplied in 1x PBS buffer with 0.09% (w/v) sodium azide and 2% sucrose. <i>Note that this product is shipped as lyophilized powder to China customers.</i>
Purification:	Affinity Purified
Conjugation:	Unconjugated
Storage:	Store at -20°C as received.
Stability:	Stable for 12 months from date of receipt.
Predicted Protein Size:	49 kDa
Gene Name:	tubulin beta 2A class IIa
Database Link:	NP_001060 Entrez Gene 7280 Human Q13885
Background:	TUBB2A belongs to the tubulin family. Tubulin is the major constituent of microtubules. It binds two moles of GTP, one at an exchangeable site on the beta chain and one at a non-exchangeable site on the alpha-chain.
Synonyms:	CDCBM5; dJ40E16.7; TUBB; TUBB2
Note:	Immunogen Sequence Homology: Rat: 100%; Human: 100%; Mouse: 100%; Sheep: 100%



[View online »](#)

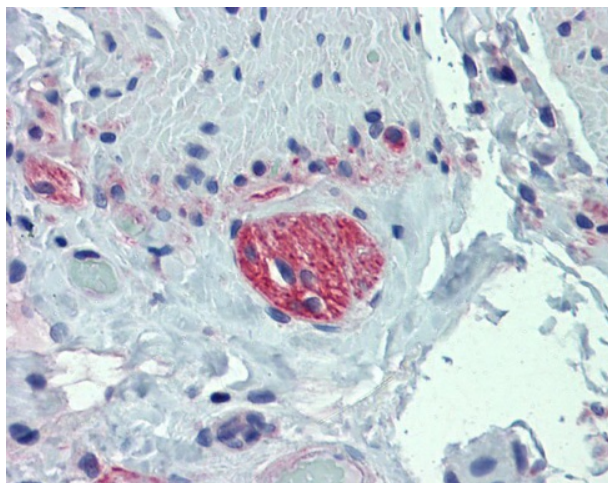
Protein Families: Druggable Genome

Protein Pathways: Gap junction, Pathogenic Escherichia coli infection

Product images:



Host: Rabbit; Target Name: TUBB2A; Antibody Dilution: 1.0 ug/ml; Sample Tissue: HepG2 cell lysate. TUBB2A is supported by BioGPS gene expression data to be expressed in HepG2



Small intestine, myenteric plexus