

Product datasheet for **TA345667**

beta Actin (ACTB) Rabbit Polyclonal Antibody

Product data:

Product Type:	Primary Antibodies
Applications:	IHC, WB
Recommended Dilution:	IHC, WB
Reactivity:	Mouse, Human
Host:	Rabbit
Isotype:	IgG
Clonality:	Polyclonal
Immunogen:	The immunogen for Anti-ACTB antibody is: synthetic peptide directed towards the middle region of Human ACTB. Synthetic peptide located within the following region: TMKIKIAPPKYSVWIGGSILASLSTFQQMWISKQEYDESGPSIVHRK
Formulation:	Liquid. Purified antibody supplied in 1x PBS buffer with 0.09% (w/v) sodium azide and 2% sucrose. <i>Note that this product is shipped as lyophilized powder to China customers.</i>
Purification:	Affinity Purified
Conjugation:	Unconjugated
Storage:	Store at -20°C as received.
Stability:	Stable for 12 months from date of receipt.
Predicted Protein Size:	42 kDa
Gene Name:	actin, beta
Database Link:	NP_001092 Entrez Gene 11461 Mouse Entrez Gene 60 Human P60709
Background:	This protein is one of six different actin proteins. Actins are highly conserved proteins that are involved in cell motility, structure, and integrity. This actin is a major constituent of the contractile apparatus and one of the two nonmuscle cytoskeletal actins.
Synonyms:	BRWS1; PS1TP5BP1
Note:	Immunogen Sequence Homology: Pig: 100%; Rat: 100%; Goat: 100%; Horse: 100%; Human: 100%; Mouse: 100%; Sheep: 100%; Bovine: 100%; Zebrafish: 100%

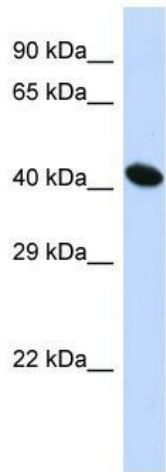


[View online »](#)

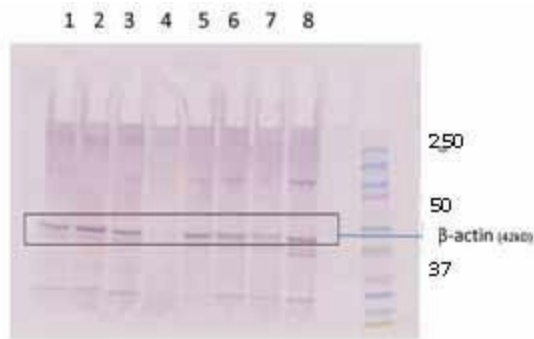
Protein Families: ES Cell Differentiation/IPS

Protein Pathways: Adherens junction, Arrhythmogenic right ventricular cardiomyopathy (ARVC), Dilated cardiomyopathy, Focal adhesion, Hypertrophic cardiomyopathy (HCM), Leukocyte transendothelial migration, Pathogenic Escherichia coli infection, Regulation of actin cytoskeleton, Tight junction, Vibrio cholerae infection, Viral myocarditis

Product images:

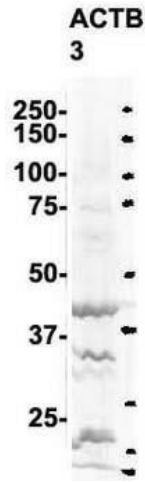


Host: Rabbit; Target Name: ACTB; Sample Tissue: HepG2 Whole Cell lysates; Antibody Dilution: 1.0 ug/ml. ACTB is strongly supported by BioGPS gene expression data to be expressed in HepG2

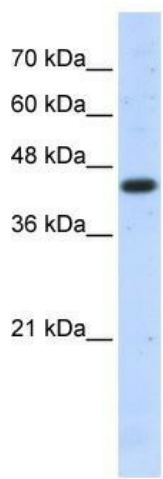


**ACTB
Western Blot**

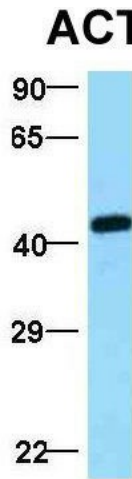
1. The sample 1 - 8 is used N2 wild type C. elegans.; 2. Each lane contain 60 ug of sample and the loading volume is 36 ul.; 3. The number 1 sample is a control without any treatment.; 4. As I get 50 ug of primary Ab, I diluted with 50 ul of water. I use 5 ul each time in 10 ml of 5% milk in PBST buffer.; 5. The secondary antibody for chemiluminescence is Peroxidase-AffiniPure Goat Anti-Rabbit IgG (H+L) (111-035-003) from Jacksonimmunoresearch.



Sample type: 1-8.N2 WT C elegans (60ug)Primary Dilution: 1: 2000Secondary Antibody: goat anti-Rabbit HRPSecondary Dilution: 1: 2000

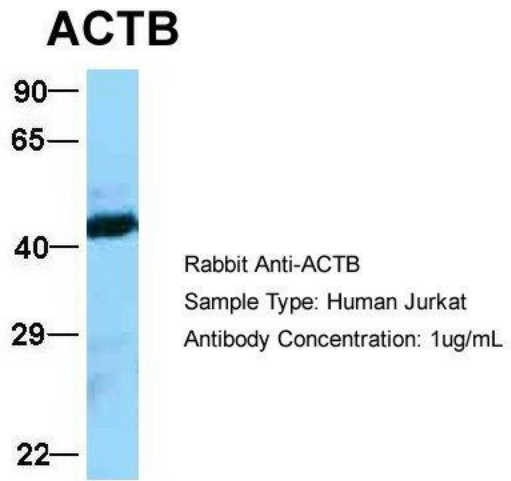


WB Suggested Anti-ACTB Antibody Titration: 0.2-1 ug/ml ELISA Titer: 1: 62500 Positive Control: Transfected 293T

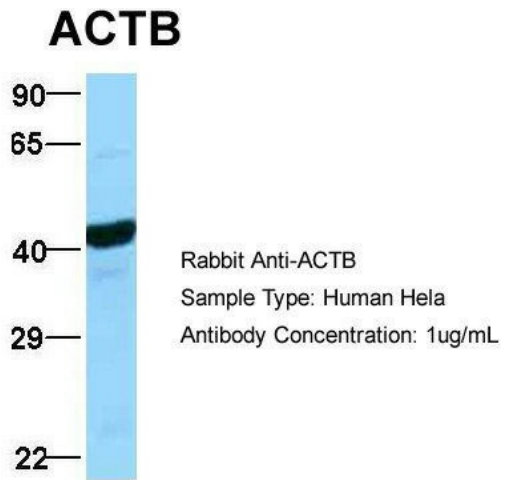


Rabbit Anti-ACTB
Sample Type: Human Adult Placenta
Antibody Concentration: 1ug/mL

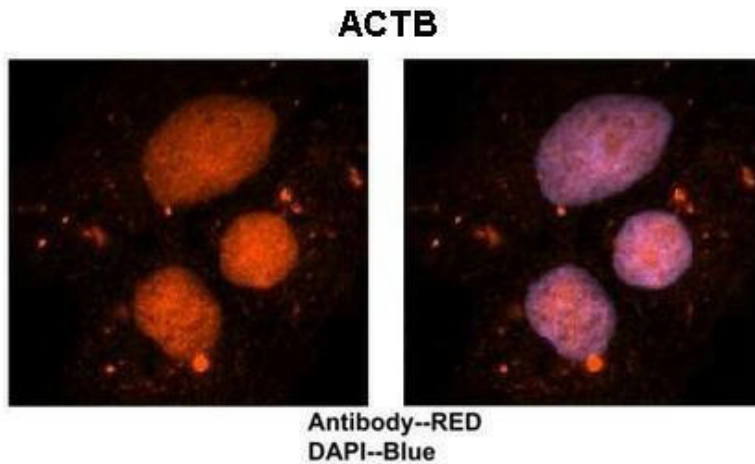
Host: Rabbit; Target Name: ACTB; Sample Tissue: Human Adult Placenta; Antibody Dilution: 1.0 ug/ml



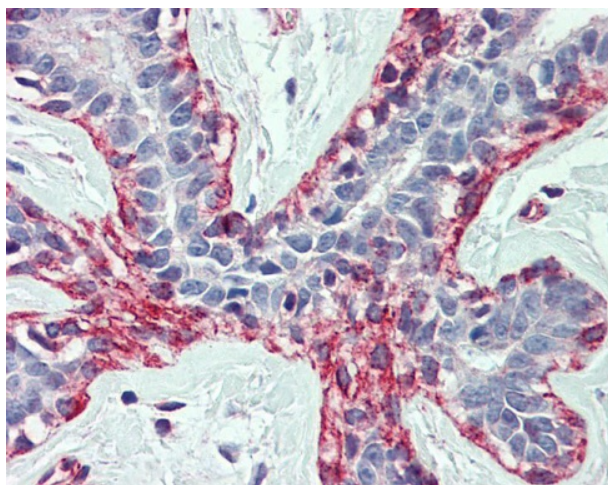
Host: Rabbit; Target Name: ACTB; Sample Tissue: Jurkat; Antibody Dilution: 1.0 ug/ml. ACTB is strongly supported by BioGPS gene expression data to be expressed in Jurkat



Host: Rabbit; Target Name: ACTB; Sample Tissue: MCF7; Antibody Dilution: 1.0 ug/ml. ACTB is strongly supported by BioGPS gene expression data to be expressed in MCF7 cells



Sample Type: Human brain stem cells Primary
Antibody Dilution: 1: 500; Secondary Antibody: Goat anti-rabbit Alexa-Fluor 594; Secondary Antibody: ilution: 1: 1000; Color/Signal Descriptions: ACTB: Red DAPI: Blue; Gene Name: ACTB; Submitted by: Dr. Yuzhi Chen, University of Arkansas for Medical Science



IHC Information: Paraffin embedded breast tissue, tested with an antibody dilution of 5 ug/ml.