

Product datasheet for **TA345665**

Mbd3 Rabbit Polyclonal Antibody

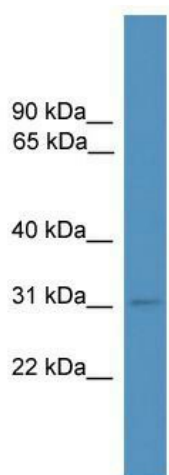
Product data:

Product Type:	Primary Antibodies
Applications:	WB
Recommended Dilution:	WB
Reactivity:	Mouse
Host:	Rabbit
Isotype:	IgG
Clonality:	Polyclonal
Immunogen:	The immunogen for anti-Mbd3 antibody: synthetic peptide corresponding to a region of Mouse. Synthetic peptide located within the following region: MERKRWECPALPQGWEREVPRRSGLSAGHRDVFYSPSGKKFRSKPQLA
Formulation:	Liquid. Purified antibody supplied in 1x PBS buffer with 0.09% (w/v) sodium azide and 2% sucrose. <i>Note that this product is shipped as lyophilized powder to China customers.</i>
Purification:	Affinity Purified
Conjugation:	Unconjugated
Storage:	Store at -20°C as received.
Stability:	Stable for 12 months from date of receipt.
Predicted Protein Size:	32 kDa
Gene Name:	methyl-CpG binding domain protein 3
Database Link:	NP_038623 Entrez Gene 17192 Mouse Q9Z2D8
Background:	The function of Mbd3 remains unknown.
Synonyms:	MBD3
Note:	Immunogen Sequence Homology: Dog: 100%; Pig: 100%; Rat: 100%; Human: 100%; Mouse: 100%; Guinea pig: 100%



[View online »](#)

Product images:



WB Suggested Anti-Mbd3 Antibody Titration: 0.2-1 ug/ml; ELISA Titer: 1: 1562500; Positive Control: Mouse Heart