

## Product datasheet for **TA345657**

### INSIG1 Rabbit Polyclonal Antibody

#### Product data:

Product Type:	Primary Antibodies
Applications:	IHC, WB
Recommended Dilution:	WB, IHC
Reactivity:	Human, Rat
Host:	Rabbit
Isotype:	IgG
Clonality:	Polyclonal
Immunogen:	The immunogen for anti-INSIG1 antibody: synthetic peptide directed towards the middle region of human INSIG1. Synthetic peptide located within the following region: ITIAFLATLITQFLVYNGVYQYTSPDFLYIRSWLPCIFFSGGVTVGNIGR
Formulation:	Liquid. Purified antibody supplied in 1x PBS buffer with 0.09% (w/v) sodium azide and 2% sucrose. <i>Note that this product is shipped as lyophilized powder to China customers.</i>
Purification:	Affinity Purified
Conjugation:	Unconjugated
Storage:	Store at -20°C as received.
Stability:	Stable for 12 months from date of receipt.
Predicted Protein Size:	36 kDa
Gene Name:	insulin induced gene 1
Database Link:	<a href="#">NP_938150</a> <a href="#">Entrez Gene 64194 Rat</a> <a href="#">Entrez Gene 3638 Human</a> <a href="#">O15503</a>
Background:	Oxysterols regulate cholesterol homeostasis through the liver X receptor (LXR)- and sterol regulatory element-binding protein (SREBP)-mediated signaling pathways. This gene is an insulin-induced gene. INSIG1 is an endoplasmic reticulum (ER) membrane prote
Synonyms:	CL-6; CL6



[View online »](#)

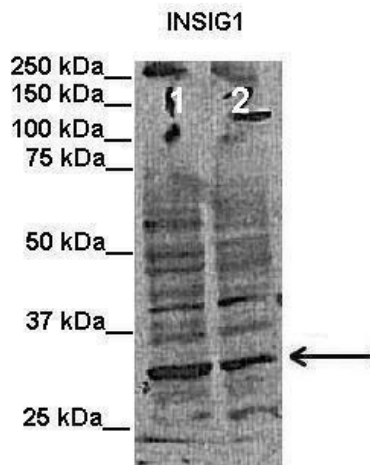
**Note:** Immunogen Sequence Homology: Dog: 100%; Pig: 100%; Rat: 100%; Goat: 100%; Horse: 100%; Human: 100%; Mouse: 100%; Sheep: 100%; Bovine: 100%; Rabbit: 100%; Guinea pig: 100%; Zebrafish: 93%

**Protein Families:** Druggable Genome, Transmembrane

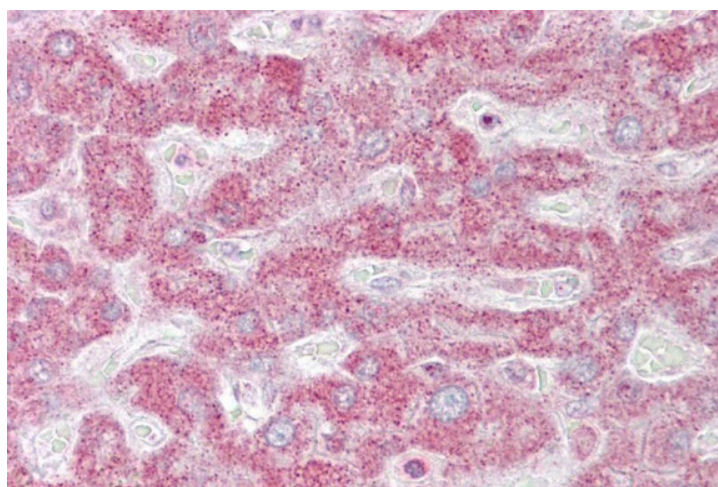
**Product images:**



WB Suggested Anti-INSIG1 Antibody Titration: 0.2-1 ug/ml; ELISA Titer: 1: 312500; Positive Control: Human Spleen



Lanes: Lane 1: 50 ug human putamen lysate; Lane 2: 50 ug rat cortex lysate; Primary Antibody Dilution: 1: 1000; Secondary Antibody: Mouse anti-rabbit HRP; Secondary Antibody Dilution: 1: 15000; Gene Name: INSIG1;



Immunohistochemistry with Liver tissue at an antibody concentration of 10 ug/ml using anti-INSIG1 antibody