

## Product datasheet for **TA345653**

### Foxc2 Rabbit Polyclonal Antibody

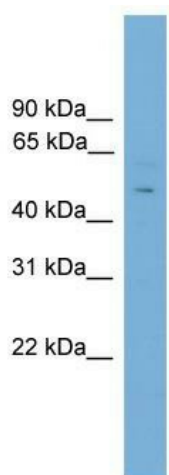
#### Product data:

Product Type:	Primary Antibodies
Applications:	WB
Recommended Dilution:	WB
Reactivity:	Mouse
Host:	Rabbit
Isotype:	IgG
Clonality:	Polyclonal
Immunogen:	The immunogen for anti-Foxc2 antibody: synthetic peptide corresponding to a region of Mouse. Synthetic peptide located within the following region: GMGRSYAPYHHQPAAPKDLVKPPYSYIALITMAIQNAPEKKITLNGIYQF
Formulation:	Liquid. Purified antibody supplied in 1x PBS buffer with 0.09% (w/v) sodium azide and 2% sucrose. <i>Note that this product is shipped as lyophilized powder to China customers.</i>
Purification:	Affinity Purified
Conjugation:	Unconjugated
Storage:	Store at -20°C as received.
Stability:	Stable for 12 months from date of receipt.
Predicted Protein Size:	53 kDa
Gene Name:	forkhead box C2
Database Link:	<a href="#">NP_038547</a> <a href="#">Entrez Gene 14234 Mouse</a> <a href="#">Q61850</a>
Background:	Foxc2 is a transcriptional activator. Foxc2 might be involved in the formation of special mesenchymal tissues.
Synonyms:	FKHL14; LD; MFH-1; MFH1
Note:	Immunogen Sequence Homology: Rat: 100%; Mouse: 100%; Dog: 93%; Pig: 93%; Horse: 93%; Human: 93%; Bovine: 93%; Guinea pig: 93%



[View online »](#)

## Product images:



WB Suggested Anti-Foxc2 Antibody Titration: 0.2-1 ug/ml; ELISA Titer: 1: 312500; Positive Control: Mouse Uterus