

Product datasheet for **TA345648**

Ehf Rabbit Polyclonal Antibody

Product data:

Product Type:	Primary Antibodies
Applications:	IHC, WB
Recommended Dilution:	WB, IHC
Reactivity:	Mouse, Human
Host:	Rabbit
Isotype:	IgG
Clonality:	Polyclonal
Immunogen:	The immunogen for anti-Ehf antibody: synthetic peptide directed towards the N terminal of mouse Ehf. Synthetic peptide located within the following region: SCIPFQEFDISGEHLCSMSLQEFTRAAGSAGQLLYSNLQHLKWNGQCSSD
Formulation:	Liquid. Purified antibody supplied in 1x PBS buffer with 0.09% (w/v) sodium azide and 2% sucrose. <i>Note that this product is shipped as lyophilized powder to China customers.</i>
Purification:	Affinity Purified
Conjugation:	Unconjugated
Storage:	Store at -20°C as received.
Stability:	Stable for 12 months from date of receipt.
Predicted Protein Size:	33 kDa
Gene Name:	ets homologous factor
Database Link:	NP_031940 Entrez Gene 26298 Human Entrez Gene 13661 Mouse O70273
Background:	Ehf is a transcriptional activator that may play a role in regulating epithelial cell differentiation and proliferation. It may act as a repressor for a specific subset of ETS/AP-1-responsive genes, and as a modulator of the nuclear response to mitogen-activated protein kinase signaling cascades. It binds to DNA sequences containing the consensus nucleotide core sequence GGAA and involved in regulation of TNFRSF10B/DR5 expression through Ets-binding sequences on the TNFRSF10B/DR5 promoter

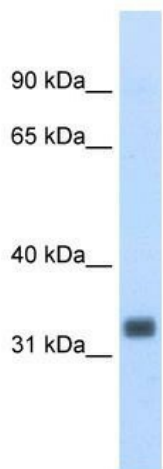


[View online »](#)

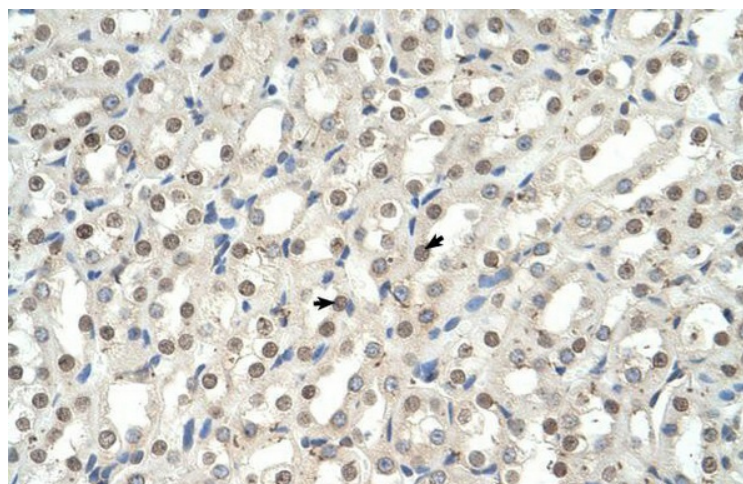
Synonyms: ESE-3; ESE3; ESE3B; ESEJ; hEHF

Note: Immunogen Sequence Homology: Rat: 100%; Mouse: 100%; Dog: 93%; Pig: 93%; Horse: 93%; Human: 93%; Sheep: 93%; Bovine: 93%; Rabbit: 93%; Guinea pig: 93%

Product images:



WB Suggested Anti-Ehf Antibody Titration: 0.2-1 ug/ml; Positive Control: Mouse Prostate



Human kidney