

Product datasheet for **TA345646**

Taf1c Rabbit Polyclonal Antibody

Product data:

Product Type:	Primary Antibodies
Applications:	WB
Recommended Dilution:	WB
Reactivity:	Mouse
Host:	Rabbit
Isotype:	IgG
Clonality:	Polyclonal
Immunogen:	The immunogen for anti-Taf1c antibody: synthetic peptide corresponding to a region of Mouse. Synthetic peptide located within the following region: RRHRGETSETQTQSKRPKRRTQLSSTFSSTSYLDSPDASSAPRSQDLST
Formulation:	Liquid. Purified antibody supplied in 1x PBS buffer with 0.09% (w/v) sodium azide and 2% sucrose. <i>Note that this product is shipped as lyophilized powder to China customers.</i>
Purification:	Affinity Purified
Conjugation:	Unconjugated
Storage:	Store at -20°C as received.
Stability:	Stable for 12 months from date of receipt.
Predicted Protein Size:	92 kDa
Gene Name:	TATA-box binding protein associated factor, RNA polymerase I, C
Database Link:	NP_067416 Entrez Gene 21341 Mouse Q6PDZ2



[View online »](#)

Background:

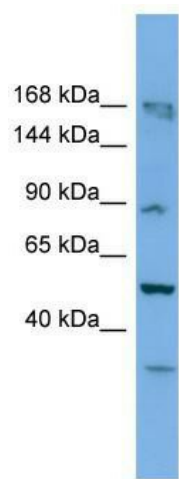
Taf1c is a component of the transcription factor SL1/TIF-IB complex, which is involved in the assembly of the PIC (preinitiation complex) during RNA polymerase I-dependent transcription. The rate of PIC formation probably is primarily dependent on the rate of association of SL1/TIF-IB with the rDNA promoter. SL1/TIF-IB is involved in stabilization of nucleolar transcription factor 1/UBTF on rDNA. Formation of SL1/TIF-IB excludes the association of TBP with TFIID subunits. Taf1c recruits RNA polymerase I to the rRNA gene promoter via interaction with RRN3.

Synonyms:

MGC:39976; SL1; TAFI95; TAFI110

Note:

Immunogen Sequence Homology: Mouse: 100%; Rat: 93%; Pig: 85%; Guinea pig: 85%

Product images:

WB Suggested Anti-Taf1c Antibody Titration: 0.2-1 ug/ml; ELISA Titer: 1: 2500; Positive Control: Mouse Uterus