

## Product datasheet for **TA345645**

### **Ppargc1a Rabbit Polyclonal Antibody**

#### **Product data:**

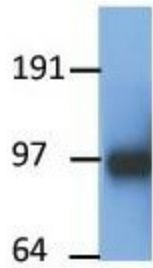
<b>Product Type:</b>	Primary Antibodies
<b>Applications:</b>	WB
<b>Recommended Dilution:</b>	WB
<b>Reactivity:</b>	Mouse
<b>Host:</b>	Rabbit
<b>Isotype:</b>	IgG
<b>Clonality:</b>	Polyclonal
<b>Immunogen:</b>	The immunogen for anti-Ppargc1a antibody: synthetic peptide directed towards the middle region of mouse Ppargc1a. Synthetic peptide located within the following region: QEIRAE LNKHFGHPCQAVFDDKSDKTSELRDGDFSNEQFSKLPVFINSGL
<b>Formulation:</b>	Liquid. Purified antibody supplied in 1x PBS buffer with 0.09% (w/v) sodium azide and 2% sucrose. <i>Note that this product is shipped as lyophilized powder to China customers.</i>
<b>Purification:</b>	Affinity Purified
<b>Conjugation:</b>	Unconjugated
<b>Storage:</b>	Store at -20°C as received.
<b>Stability:</b>	Stable for 12 months from date of receipt.
<b>Predicted Protein Size:</b>	90 kDa
<b>Gene Name:</b>	peroxisome proliferative activated receptor, gamma, coactivator 1 alpha
<b>Database Link:</b>	<a href="#">NP_032930</a> <a href="#">Entrez Gene 19017 Mouse O70343</a>
<b>Background:</b>	Ppargc1a is a transcriptional coactivator for steroid receptors and nuclear receptors. Ppargc1a greatly increases the transcriptional activity of PPARG and thyroid hormone receptor on the uncoupling protein promoter. Ppargc1a can regulate key mitochondrial genes that contribute to the program of adaptive thermogenesis.
<b>Synonyms:</b>	LEM6; PGC-1(alpha); PGC-1-alpha; PGC-1v; PGC1; PGC1A; PPARGC-1-alpha; PPARGC1



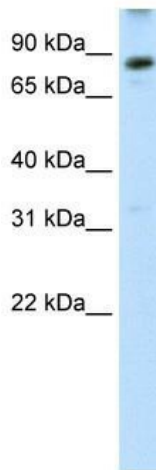
[View online »](#)

**Note:** Immunogen Sequence Homology: Mouse: 100%; Pig: 92%; Rat: 92%; Horse: 92%; Rabbit: 92%; Guinea pig: 92%; Goat: 86%; Bovine: 86%; Dog: 83%; Human: 83%; Sheep: 79%

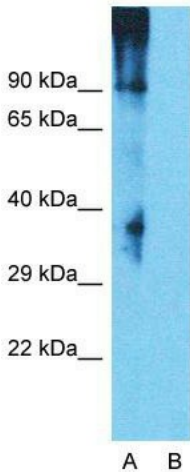
**Product images:**



Ppargc1a antibody - middle region validated by WB using Transfected Melanoma Cell at 1: 1000.



WB Suggested Anti-Ppargc1a Antibody Titration: 0.2-1 ug/ml; ELISA Titer: 1: 312500; Positive Control: SP2/0 cell lysate



**Anti-Ppargc1a Western Blot & Peptide Block Validation**

Lysate: SP2/0 cell

Lane A: Primary Antibody  
Lane B: Primary Antibody + Blocking Peptide

Primary Antibody Concentration: 1.0µg/ml  
Peptide Concentration: 5.0µg/ml  
Lysate Quantity: 25µg/lane  
Gel Concentration: 12%

Host: Rabbit; Target Name: Ppargc1a; Sample Tissue: SP2/0; Lane A: Primary Antibody; Lane B: Primary Antibody + Blocking Peptide; Primary Antibody Concentration: 1 ug/ml; Peptide Concentration: 5 ug/ml; Lysate Quantity: 25 ug/lane; Gel Concentration: 0.12%