

Product datasheet for **TA345644**

SIDT2 Rabbit Polyclonal Antibody

Product data:

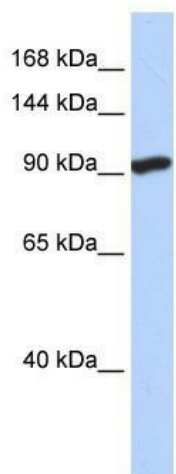
Product Type:	Primary Antibodies
Applications:	WB
Recommended Dilution:	WB
Reactivity:	Human
Host:	Rabbit
Isotype:	IgG
Clonality:	Polyclonal
Immunogen:	The immunogen for anti-SIDT2 antibody: synthetic peptide directed towards the N terminal of human SIDT2. Synthetic peptide located within the following region: LNKQKGGAPLLFVVRQKEAVVSFQVPLILRGMFQRKYLYQKVERTLCQPPT
Formulation:	Liquid. Purified antibody supplied in 1x PBS buffer with 0.09% (w/v) sodium azide and 2% sucrose. <i>Note that this product is shipped as lyophilized powder to China customers.</i>
Purification:	Affinity Purified
Conjugation:	Unconjugated
Storage:	Store at -20°C as received.
Stability:	Stable for 12 months from date of receipt.
Predicted Protein Size:	94 kDa
Gene Name:	SID1 transmembrane family member 2
Database Link:	NP_001035545 Entrez Gene 51092 Human Q8NBJ9
Background:	SIDT2 belongs to the SID1 family. It is a multi-pass membrane protein. The exact function of SIDT2 remains unknown.
Synonyms:	CGI-40
Note:	Immunogen Sequence Homology: Pig: 100%; Rat: 100%; Human: 100%; Bovine: 100%; Guinea pig: 100%; Dog: 93%; Horse: 93%; Mouse: 93%; Rabbit: 93%



[View online »](#)

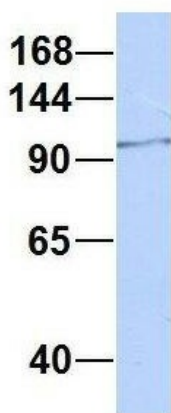
Protein Families: Transmembrane

Product images:



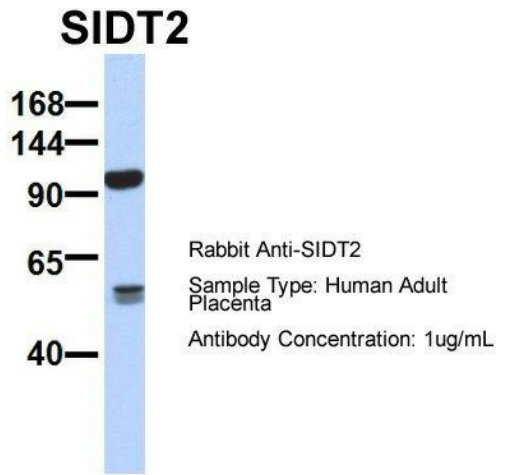
WB Suggested Anti-SIDT2 Antibody Titration: 0.2-1 ug/ml; ELISA Titer: 1: 1562500; Positive Control: Hela cell lysate

SIDT2

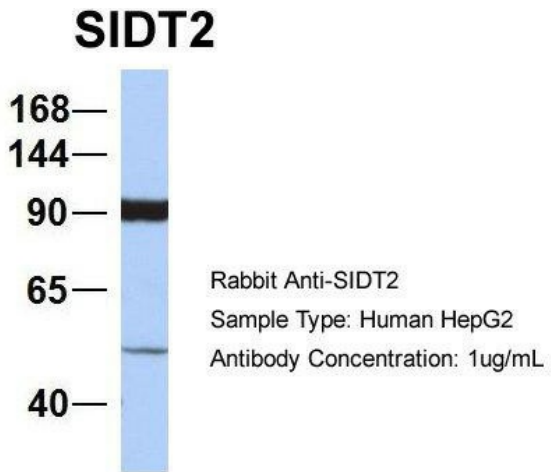


Rabbit Anti-SIDT2
 Sample Type: Human Fetal Brain
 Antibody Concentration: 1ug/mL

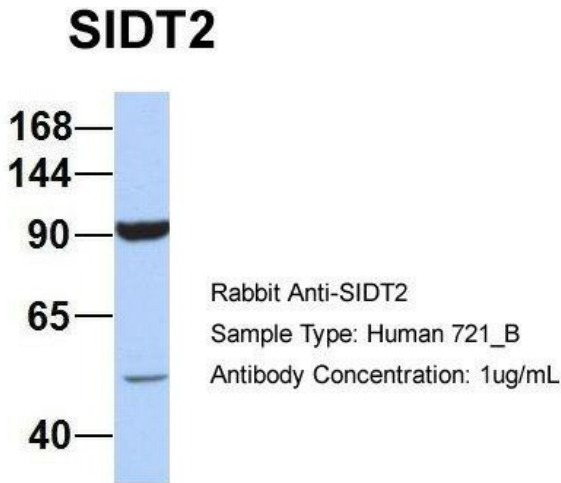
Host: Rabbit; Target Name: NOP56; Sample Tissue: Human Fetal Brain; Antibody Dilution: 1.0 ug/ml



Host: Rabbit; Target Name: SERPINA3; Sample Tissue: Human Adult Placenta; Antibody Dilution: 1.0 ug/ml



Host: Rabbit; Target Name: EGFL8; Sample Tissue: HepG2; Antibody Dilution: 1.0 ug/ml. SIDT2 is strongly supported by BioGPS gene expression data to be expressed in Human HepG2 cells



Host: Rabbit; Target Name: WT1; Sample Tissue: 721_B; Antibody Dilution: 1.0 ug/ml. SIDT2 is supported by BioGPS gene expression data to be expressed in 721_B