

Product datasheet for **TA345643**

TBX20 Rabbit Polyclonal Antibody

Product data:

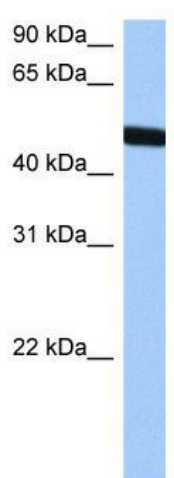
Product Type:	Primary Antibodies
Applications:	WB
Recommended Dilution:	WB
Reactivity:	Human
Host:	Rabbit
Isotype:	IgG
Clonality:	Polyclonal
Immunogen:	The immunogen for anti-TBX20 antibody: synthetic peptide directed towards the middle region of human TBX20. Synthetic peptide located within the following region: MVSFEKVKLTNNELDQHGHIILNSMHKYQPRVHIIKKKDHTASLLNLKSE
Formulation:	Liquid. Purified antibody supplied in 1x PBS buffer with 0.09% (w/v) sodium azide and 2% sucrose. <i>Note that this product is shipped as lyophilized powder to China customers.</i>
Purification:	Affinity Purified
Conjugation:	Unconjugated
Storage:	Store at -20°C as received.
Stability:	Stable for 12 months from date of receipt.
Predicted Protein Size:	50 kDa
Gene Name:	T-box 20
Database Link:	NP_001071121 Entrez Gene 57057 Human Q9UMR3
Background:	TBX20 is a member of the T-box transcription factor family expressed in the developing heart, eye, ventral neural tube, and limbs, indicating a possible role in regulating development of these tissues.
Synonyms:	ASD4
Note:	Immunogen Sequence Homology: Dog: 100%; Pig: 100%; Rat: 100%; Horse: 100%; Human: 100%; Mouse: 100%; Bovine: 100%; Rabbit: 100%; Zebrafish: 100%; Guinea pig: 100%



[View online »](#)

Protein Families: Transcription Factors

Product images:



WB Suggested Anti-TBX20 Antibody Titration: 0.2-1 ug/ml; Positive Control: HepG2 cell lysate