

## Product datasheet for **TA345640**

### **KDM6B Rabbit Polyclonal Antibody**

#### **Product data:**

Product Type:	Primary Antibodies
Applications:	WB
Recommended Dilution:	WB
Reactivity:	Human
Host:	Rabbit
Isotype:	IgG
Clonality:	Polyclonal
Immunogen:	The immunogen for anti-JMJD3 antibody: synthetic peptide directed towards the middle region of human JMJD3. Synthetic peptide located within the following region: AGLQGVVLEQYRTEELAQAYDAFTLVRARRARGQRRRALGQAAGTGFGS
Formulation:	Liquid. Purified antibody supplied in 1x PBS buffer with 0.09% (w/v) sodium azide and 2% sucrose. <i>Note that this product is shipped as lyophilized powder to China customers.</i>
Purification:	Protein A purified
Conjugation:	Unconjugated
Storage:	Store at -20°C as received.
Stability:	Stable for 12 months from date of receipt.
Predicted Protein Size:	70 kDa
Gene Name:	lysine demethylase 6B
Database Link:	<a href="#">NP_001073893</a> <a href="#">Entrez Gene 23135 Human</a> <a href="#">O15054</a>
Background:	JMJD3 is a histone demethylase that specifically demethylates 'Lys-27' of histone H3, thereby playing a central role in histone code. It plays a central role in regulation of posterior development, by regulating HOX gene expression. It is involved in inflammatory response by participating in macrophage differentiation in case of inflammation by regulating gene expression and macrophage differentiation.
Synonyms:	JMJD3



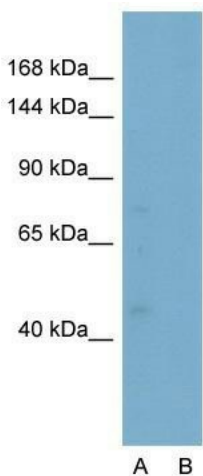
[View online »](#)

**Note:** Immunogen Sequence Homology: Dog: 100%; Pig: 100%; Rat: 100%; Horse: 100%; Human: 100%; Mouse: 100%; Bovine: 100%; Rabbit: 100%

**Product images:**



WB Suggested Anti-JMJD3 Antibody Titration: 1.25 ug/ml; Positive Control: HepG2 cell lysate



**Anti-JMJD3 Western Blot & Peptide Block Validation**

Lysate: HepG2 Cell

Lane A: Primary Antibody  
Lane B: Primary Antibody + Blocking Peptide

Primary Antibody Concentration: 2.5µg/ml  
Peptide Concentration: 2.0µg/ml  
Lysate Quantity: 25µg/lane  
Gel Concentration: 6-18%

Host: Rabbit; Target Name: JMJD3; Sample Tissue: HepG2; Lane A: Primary Antibody; Lane B: Primary Antibody + Blocking Peptide; Primary Antibody Concentration: 2.5 ug/mL; Peptide Concentration: 2.0 ug/mL; Lysate Quantity: 25 ug/lane; Gel Concentration: 6%-18%