

Product datasheet for **TA345638**

v Myb (MYBL1) Rabbit Polyclonal Antibody

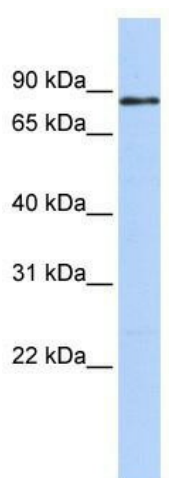
Product data:

Product Type:	Primary Antibodies
Applications:	WB
Recommended Dilution:	WB
Reactivity:	Human
Host:	Rabbit
Isotype:	IgG
Clonality:	Polyclonal
Immunogen:	The immunogen for anti-MYBL1 antibody: synthetic peptide directed towards the middle region of human MYBL1. Synthetic peptide located within the following region: HVRIHTGEKPYHCDPCGLHFRHKSQRLRLHLRQKHGAATNTKVHYHILGGP
Formulation:	Liquid. Purified antibody supplied in 1x PBS buffer with 0.09% (w/v) sodium azide and 2% sucrose. <i>Note that this product is shipped as lyophilized powder to China customers.</i>
Purification:	Affinity Purified
Conjugation:	Unconjugated
Storage:	Store at -20°C as received.
Stability:	Stable for 12 months from date of receipt.
Predicted Protein Size:	75 kDa
Gene Name:	MYB proto-oncogene like 1
Database Link:	NP_001073885 Entrez Gene 4603 Human P10243
Background:	MYBL1 is a strong transcriptional activator; DNA-binding protein that specifically recognize the sequence 5'-YAAC[GT]G-3'. MYBL1 could have a role in the proliferation and/or differentiation of neurogenic, spermatogenic and B-lymphoid cells.
Synonyms:	A-MYB; AMYB
Note:	Immunogen Sequence Homology: Dog: 100%; Rat: 100%; Horse: 100%; Human: 100%; Mouse: 100%; Yeast: 100%; Rabbit: 100%; Pig: 90%; Guinea pig: 90%



[View online »](#)

Product images:



WB Suggested Anti-MYBL1 Antibody Titration:
0.2-1 ug/ml; ELISA Titer: 1: 62500; Positive
Control: HeLa cell lysate