

## Product datasheet for **TA345632**

### ZNF568 Rabbit Polyclonal Antibody

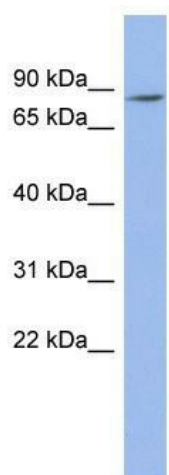
#### Product data:

Product Type:	Primary Antibodies
Applications:	WB
Recommended Dilution:	WB
Reactivity:	Human
Host:	Rabbit
Isotype:	IgG
Clonality:	Polyclonal
Immunogen:	The immunogen for anti-ZNF568 antibody: synthetic peptide directed towards the N terminal of human ZNF568. Synthetic peptide located within the following region: NLYRDVMLENYSNLVTVGCQVTKPDVIFKLEQEEEPWVMEEMFGRHCPE
Formulation:	Liquid. Purified antibody supplied in 1x PBS buffer with 0.09% (w/v) sodium azide and 2% sucrose.
Purification:	Affinity Purified
Conjugation:	Unconjugated
Storage:	Store at -20°C as received.
Stability:	Stable for 12 months from date of receipt.
Predicted Protein Size:	74 kDa
Gene Name:	zinc finger protein 568
Database Link:	<a href="#">NP_940941</a> <a href="#">Entrez Gene 374900 Human</a> <a href="#">Q3ZCX4</a>
Background:	The function of the Anti-ZNF568 gene has not yet been determined.
Synonyms:	DKFZp667O0524; DKFZp686B0797; FLJ34820; FLJ35804
Note:	Immunogen Sequence Homology: Rat: 100%; Human: 100%; Bovine: 100%; Dog: 93%; Pig: 93%; Horse: 93%; Rabbit: 93%; Mouse: 86%; Guinea pig: 86%; Sheep: 77%
Protein Families:	Transcription Factors



[View online »](#)

## Product images:



WB Suggested Anti-ZNF568 Antibody Titration:  
0.2-1 ug/ml; ELISA Titer: 1: 62500; Positive  
Control: OVCAR-3 cell lysate