

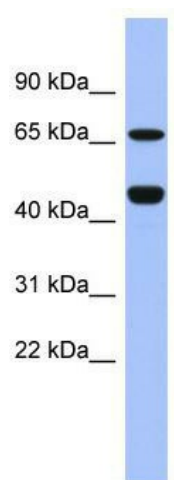
Product datasheet for **TA345627**

ZNF713 Rabbit Polyclonal Antibody

Product data:

| | |
|-------------------------|--|
| Product Type: | Primary Antibodies |
| Applications: | WB |
| Recommended Dilution: | WB |
| Reactivity: | Human |
| Host: | Rabbit |
| Isotype: | IgG |
| Clonality: | Polyclonal |
| Immunogen: | The immunogen for anti-ZNF713 antibody: synthetic peptide directed towards the middle region of human ZNF713. Synthetic peptide located within the following region: TGEKPYKCNECGKAQSAHLNQHRKIHTREKLCEYKCEQTVRHSPSFSS |
| Formulation: | Liquid. Purified antibody supplied in 1x PBS buffer with 0.09% (w/v) sodium azide and 2% sucrose. |
| Purification: | Affinity Purified |
| Conjugation: | Unconjugated |
| Storage: | Store at -20°C as received. |
| Stability: | Stable for 12 months from date of receipt. |
| Predicted Protein Size: | 50 kDa |
| Gene Name: | zinc finger protein 713 |
| Database Link: | NP_872439 Entrez Gene 349075 Human |
| Background: | ZNF713 is a new candidate transcription factor. |
| Synonyms: | FLJ39963 |
| Note: | Immunogen Sequence Homology: Dog: 100%; Pig: 100%; Horse: 100%; Human: 100%; Bovine: 100%; Rabbit: 100%; Zebrafish: 92%; Rat: 86%; Mouse: 83%; Guinea pig: 83% |


[View online »](#)

Product images:

WB Suggested Anti-ZNF713 Antibody Titration:
0.2-1 ug/ml; ELISA Titer: 1: 312500; Positive
Control: Human Spleen