

Product datasheet for **TA345626**

ZNF677 Rabbit Polyclonal Antibody

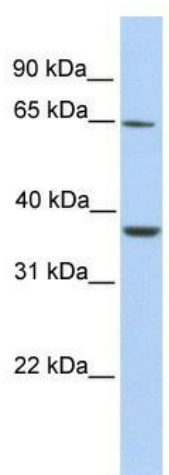
Product data:

Product Type:	Primary Antibodies
Applications:	WB
Recommended Dilution:	WB
Reactivity:	Human
Host:	Rabbit
Isotype:	IgG
Clonality:	Polyclonal
Immunogen:	The immunogen for anti-ZNF677 antibody: synthetic peptide directed towards the C terminal of human ZNF677. Synthetic peptide located within the following region: HIEKKHCKHNIHGNALFQSSNLGDHQKSYNREKHIKYNETKIKYSSCT
Formulation:	Liquid. Purified antibody supplied in 1x PBS buffer with 0.09% (w/v) sodium azide and 2% sucrose. <i>Note that this product is shipped as lyophilized powder to China customers.</i>
Purification:	Affinity Purified
Conjugation:	Unconjugated
Storage:	Store at -20°C as received.
Stability:	Stable for 12 months from date of receipt.
Predicted Protein Size:	68 kDa
Gene Name:	zinc finger protein 677
Database Link:	NP_872415 Entrez Gene 342926 Human Q86XU0
Background:	ZNF677 belongs to the krueppel C2H2-type zinc-finger protein family. It contains 10 C2H2-type zinc fingers and 1 KRAB domain. ZNF677 may be involved in transcriptional regulation.
Synonyms:	MGC48625
Note:	Immunogen Sequence Homology: Human: 100%
Protein Families:	Transcription Factors



[View online »](#)

Product images:



WB Suggested Anti-ZNF677 Antibody Titration:
0.2-1 ug/ml; ELISA Titer: 1: 312500; Positive
Control: Human Liver