

Product datasheet for **TA345624**

ZSCAN1 Rabbit Polyclonal Antibody

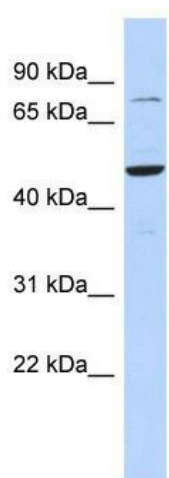
Product data:

| | |
|-------------------------|--|
| Product Type: | Primary Antibodies |
| Applications: | WB |
| Recommended Dilution: | WB |
| Reactivity: | Human |
| Host: | Rabbit |
| Isotype: | IgG |
| Clonality: | Polyclonal |
| Immunogen: | The immunogen for anti-ZSCAN1 antibody: synthetic peptide directed towards the middle region of human ZSCAN1. Synthetic peptide located within the following region: PEEGKVFHLHNSVLTEHGKIHLLPEPRKKAPRSKGPRESVPPRDGAQGPVA |
| Formulation: | Liquid. Purified antibody supplied in 1x PBS buffer with 0.09% (w/v) sodium azide and 2% sucrose. |
| Purification: | Affinity Purified |
| Conjugation: | Unconjugated |
| Storage: | Store at -20°C as received. |
| Stability: | Stable for 12 months from date of receipt. |
| Predicted Protein Size: | 45 kDa |
| Gene Name: | zinc finger and SCAN domain containing 1 |
| Database Link: | NP_872378 Entrez Gene 284312 Human Q8NBB4 |
| Background: | ZSCAN1 may be involved in transcriptional regulation. |
| Synonyms: | MZF-1; ZNF915 |
| Note: | Immunogen Sequence Homology: Human: 100% |
| Protein Families: | Transcription Factors |



[View online »](#)

Product images:



WB Suggested Anti-ZSCAN1 Antibody Titration:
0.2-1 ug/ml; ELISA Titer: 1: 312500; Positive
Control: 721_B cell lysate