

Product datasheet for **TA345618**

BCL6B Rabbit Polyclonal Antibody

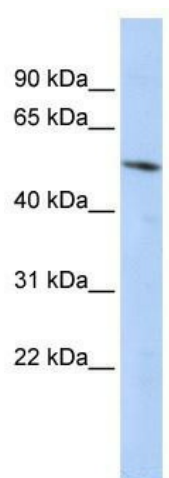
Product data:

Product Type:	Primary Antibodies
Applications:	WB
Recommended Dilution:	WB
Reactivity:	Human
Host:	Rabbit
Isotype:	IgG
Clonality:	Polyclonal
Immunogen:	The immunogen for anti-BCL6B antibody: synthetic peptide directed towards the middle region of human BCL6B. Synthetic peptide located within the following region: LQSDLDQPAFQQLVSFSESGSLGNSSGSDVTSLSQLPDTPNMVPSPVE
Formulation:	Liquid. Purified antibody supplied in 1x PBS buffer with 0.09% (w/v) sodium azide and 2% sucrose. <i>Note that this product is shipped as lyophilized powder to China customers.</i>
Purification:	Affinity Purified
Conjugation:	Unconjugated
Storage:	Store at -20°C as received.
Stability:	Stable for 12 months from date of receipt.
Predicted Protein Size:	52 kDa
Gene Name:	B-cell CLL/lymphoma 6B
Database Link:	NP_862827 Entrez Gene 255877 Human Q8N143
Background:	BCL6B acts as a sequence-specific transcriptional repressor in association with BCL6. BCL6B may function in a narrow stage or be related to some events in the early B-cell development.
Synonyms:	BAZF; ZBTB28; ZNF62
Note:	Immunogen Sequence Homology: Pig: 100%; Rat: 100%; Horse: 100%; Human: 100%; Bovine: 100%; Rabbit: 100%; Guinea pig: 100%; Dog: 93%; Mouse: 93%; Zebrafish: 86%



[View online »](#)

Product images:



WB Suggested Anti-BCL6B Antibody Titration: 0.2-1 ug/ml; ELISA Titer: 1: 1562500; Positive Control: HepG2 cell lysate