

Product datasheet for **TA345616**

ZNF875 Rabbit Polyclonal Antibody

Product data:

Product Type:	Primary Antibodies
Applications:	IHC, WB
Recommended Dilution:	WB, IHC
Reactivity:	Human
Host:	Rabbit
Isotype:	IgG
Clonality:	Polyclonal
Immunogen:	The immunogen for anti-HKR1 antibody: synthetic peptide directed towards the C terminal of human HKR1. Synthetic peptide located within the following region: RECGQGFSRQSHLIRHQRTHSGEKPYICRKCGRGFSRKSNLIRHQRTHS
Formulation:	Liquid. Purified antibody supplied in 1x PBS buffer with 0.09% (w/v) sodium azide and 2% sucrose. <i>Note that this product is shipped as lyophilized powder to China customers.</i>
Purification:	Affinity Purified
Conjugation:	Unconjugated
Storage:	Store at -20°C as received.
Stability:	Stable for 12 months from date of receipt.
Predicted Protein Size:	75 kDa
Gene Name:	HKR1, GLI-Kruppel zinc finger family member
Database Link:	NP_861451 Entrez Gene 284459 Human P10072



[View online »](#)

Background:

HKR1 is one of the GLI-Kruppel family of human genes. Members of this family have similar H-C links, i.e., a conserved stretch of 9 amino acids connecting the C-terminal histidine of one finger to the N-terminal cysteine of the next. On the basis of amino acid sequence and intron-exon organization, the genes could be placed into one of two subgroups: the GLI subgroup (with the consensus finger amino acid sequence [Y/F]XCX3GCX3[F/Y]X5LX2HX3-4H[T/S]GEKP) or the Kr subgroup (with the consensus finger amino acid sequence [Y/F]XCX2CX3FX5LX2HXRHTGEKP).

Synonyms:

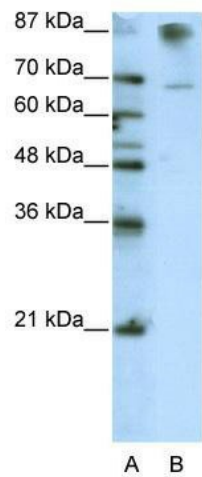
ZNF875

Note:

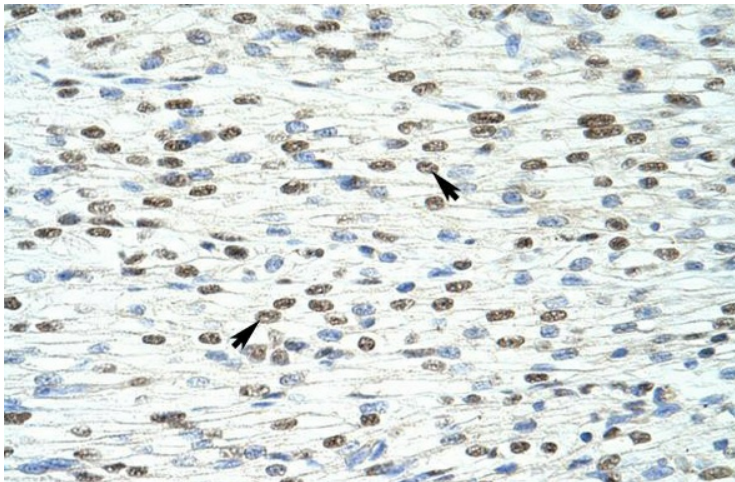
Immunogen Sequence Homology: Dog: 100%; Pig: 100%; Rat: 100%; Horse: 100%; Human: 100%; Mouse: 100%; Bovine: 100%; Guinea pig: 92%; Rabbit: 86%

Protein Families:

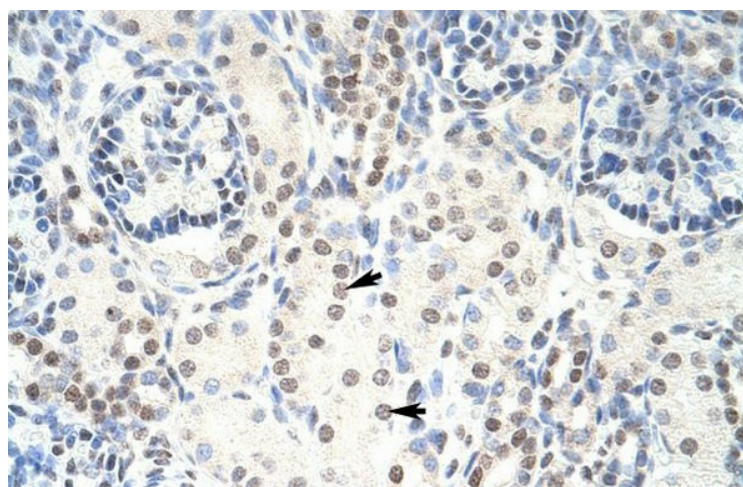
Druggable Genome, Transcription Factors

Product images:


WB Suggested Anti-HKR1 Antibody Titration:
0.125 ug/ml; ELISA Titer: 1: 12500; Positive
Control: HepG2 cell lysate



Human Heart



Human kidney