

Product datasheet for **TA345614**

ILF1 (FOXK2) Rabbit Polyclonal Antibody

Product data:

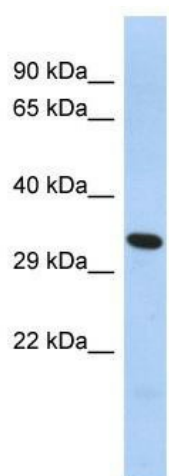
Product Type:	Primary Antibodies
Applications:	WB
Recommended Dilution:	WB
Reactivity:	Human
Host:	Rabbit
Isotype:	IgG
Clonality:	Polyclonal
Immunogen:	The immunogen for anti-FOXK2 antibody: synthetic peptide directed towards the C terminal of human FOXK2. Synthetic peptide located within the following region: DKQLTLNGIYHITKNYPYRTADKGWQRGESFAHVGNTIRIRIGLPAHKA
Formulation:	Liquid. Purified antibody supplied in 1x PBS buffer with 0.09% (w/v) sodium azide and 2% sucrose. <i>Note that this product is shipped as lyophilized powder to China customers.</i>
Purification:	Affinity Purified
Conjugation:	Unconjugated
Storage:	Store at -20°C as received.
Stability:	Stable for 12 months from date of receipt.
Predicted Protein Size:	34 kDa
Gene Name:	forkhead box K2
Database Link:	NP_004505 Entrez Gene 3607 Human Q01167
Background:	FOXK2 contains a fork head DNA binding domain. This protein can bind to the purine-rich motifs of the HIV long terminal repeat (LTR), and to the similar purine-rich motif in the interleukin 2 (IL2) promoter. It may be involved in the regulation of viral and cellular promoter elements.
Synonyms:	ILF; ILF-1; ILF1
Note:	Immunogen Sequence Homology: Human: 100%



[View online »](#)

Protein Families: Druggable Genome, Transcription Factors

Product images:



WB Suggested Anti-FOXK2 Antibody Titration: 0.2-1 ug/ml; ELISA Titer: 1: 312500; Positive Control: THP-1 cell lysate