

Product datasheet for **TA345613**

ILF1 (FOXK2) Rabbit Polyclonal Antibody

Product data:

Product Type:	Primary Antibodies
Applications:	WB
Recommended Dilution:	WB
Reactivity:	Human
Host:	Rabbit
Isotype:	IgG
Clonality:	Polyclonal
Immunogen:	The immunogen for anti-FOXK2 antibody: synthetic peptide directed towards the middle region of human FOXK2. Synthetic peptide located within the following region: GTASRIIQAQTTPVQTVTIVQQAPLGQHQLPIKTVTQNGTHVASVP TAV
Formulation:	Liquid. Purified antibody supplied in 1x PBS buffer with 0.09% (w/v) sodium azide and 2% sucrose. <i>Note that this product is shipped as lyophilized powder to China customers.</i>
Purification:	Affinity Purified
Conjugation:	Unconjugated
Storage:	Store at -20°C as received.
Stability:	Stable for 12 months from date of receipt.
Predicted Protein Size:	69 kDa
Gene Name:	forkhead box K2
Database Link:	NP_004505 Entrez Gene 3607 Human Q01167



[View online »](#)

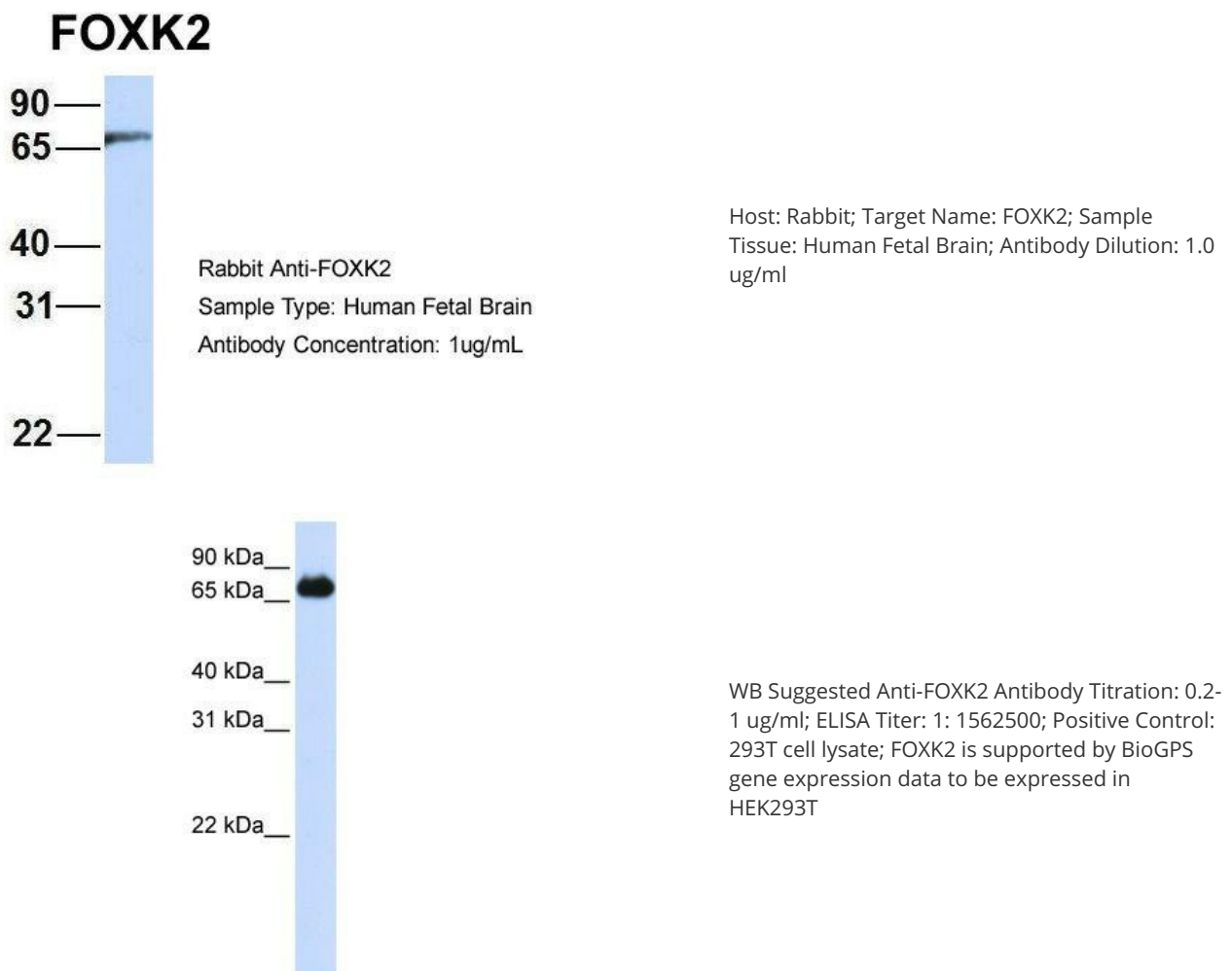
Background: FOXK2 contains a fork head DNA binding domain. This protein can bind to the purine-rich motifs of the HIV long terminal repeat (LTR), and to the similar purine-rich motif in the interleukin 2 (IL2) promoter. It may be involved in the regulation of viral and cellular promoter elements. The protein encoded by this gene contains a fork head DNA binding domain. This protein can bind to the purine-rich motifs of the HIV long terminal repeat (LTR), and to the similar purine-rich motif in the interleukin 2 (IL2) promoter. It may be involved in the regulation of viral and cellular promoter elements.

Synonyms: ILF; ILF-1; ILF1

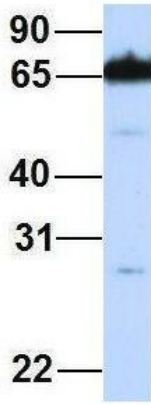
Note: Immunogen Sequence Homology: Dog: 100%; Pig: 100%; Rat: 100%; Horse: 100%; Human: 100%; Mouse: 100%; Bovine: 100%; Rabbit: 100%; Zebrafish: 100%

Protein Families: Druggable Genome, Transcription Factors

Product images:



FOXK2



Rabbit Anti-FOXK2
Sample Type: Human 721_B
Antibody Concentration: 1ug/mL

Host: Rabbit; Target Name: FOXK2; Sample Tissue: 721_B; Antibody Dilution: 1.0 ug/ml; FOXK2 is supported by BioGPS gene expression data to be expressed in 721_B