

## Product datasheet for **TA345611**

### RNF166 Rabbit Polyclonal Antibody

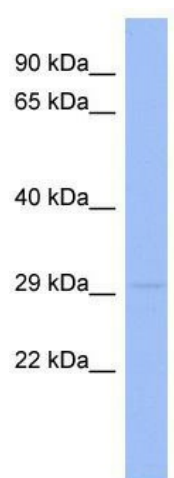
#### Product data:

Product Type:	Primary Antibodies
Applications:	WB
Recommended Dilution:	WB
Reactivity:	Human
Host:	Rabbit
Isotype:	IgG
Clonality:	Polyclonal
Immunogen:	The immunogen for anti-RNF166 antibody: synthetic peptide directed towards the middle region of human RNF166. Synthetic peptide located within the following region: RVVCPICSAMPWGDPSYKSANFLQHLLHRHKFSYDTFVDYSIDEEAAFQA
Formulation:	Liquid. Purified antibody supplied in 1x PBS buffer with 0.09% (w/v) sodium azide and 2% sucrose.
Purification:	Affinity Purified
Conjugation:	Unconjugated
Storage:	Store at -20°C as received.
Stability:	Stable for 12 months from date of receipt.
Predicted Protein Size:	26 kDa
Gene Name:	ring finger protein 166
Database Link:	<a href="#">NP_849163</a> <a href="#">Entrez Gene 115992 Human</a> <a href="#">Q96A37</a>
Background:	The exact function of the protein encoded by this gene is not known.
Synonyms:	MGC2647; MGC14381
Note:	Immunogen Sequence Homology: Dog: 100%; Pig: 100%; Rat: 100%; Horse: 100%; Human: 100%; Mouse: 100%; Bovine: 100%; Zebrafish: 100%; Guinea pig: 100%; Rabbit: 92%
Protein Families:	Druggable Genome



[View online »](#)

## Product images:



WB Suggested Anti-RNF166 Antibody Titration:  
0.2-1 ug/ml; ELISA Titer: 1: 312500; Positive  
Control: THP-1 cell lysate