

## Product datasheet for **TA345609**

### TFAP2E Rabbit Polyclonal Antibody

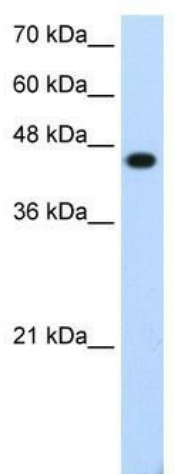
#### Product data:

Product Type:	Primary Antibodies
Applications:	WB
Recommended Dilution:	WB
Reactivity:	Human
Host:	Rabbit
Isotype:	IgG
Clonality:	Polyclonal
Immunogen:	The immunogen for anti-TFAP2E antibody: synthetic peptide directed towards the C terminal of human TFAP2E. Synthetic peptide located within the following region: FGGPAICAAALTAFQNYLLESLKGLDKMFLSSVSGHGETKASEKDAKHRK
Formulation:	Liquid. Purified antibody supplied in 1x PBS buffer with 0.09% (w/v) sodium azide and 2% sucrose.
Purification:	Affinity Purified
Conjugation:	Unconjugated
Storage:	Store at -20°C as received.
Stability:	Stable for 12 months from date of receipt.
Predicted Protein Size:	45 kDa
Gene Name:	transcription factor AP-2 epsilon
Database Link:	<a href="#">NP_848643</a> <a href="#">Entrez Gene 339488 Human</a> <a href="#">Q6VUC0</a>
Background:	TFAP2E belongs to AP-2 family of transcription factors which play an important role in regulating gene expression during development and differentiation of multiple organs and tissues. It may play an important role in skin biology.
Synonyms:	AP2E
Note:	Immunogen Sequence Homology: Pig: 100%; Rat: 100%; Human: 100%; Guinea pig: 100%; Horse: 93%; Bovine: 93%; Rabbit: 93%; Mouse: 86%


[View online »](#)

Protein Families: Transcription Factors

**Product images:**



WB Suggested Anti-TFAP2E Antibody Titration:  
1.25 ug/ml; ELISA Titer: 1: 312500; Positive  
Control: Transfected 293T